

Hollins University

Hollins Digital Commons

The Spinster

Hollins Publications

1917

The Spinster (1917)

Hollins Institute

Follow this and additional works at: <https://digitalcommons.hollins.edu/spinster>



Part of the [Higher Education Commons](#), [Social History Commons](#), [United States History Commons](#), and the [Women's History Commons](#)

Recommended Citation

The Spinster. Roanoke, Va.: Stone Printing & Manufacturing Co., 1917.

This Book is brought to you for free and open access by the Hollins Publications at Hollins Digital Commons. It has been accepted for inclusion in The Spinster by an authorized administrator of Hollins Digital Commons. For more information, please contact lvillette@hollins.edu, millerjc@hollins.edu.



THE MODERN SPINSTER

THE SPINSTER



Where Singleness is Bliss,
'Tis Folly to be Wives

EDITED BY THE
STUDENTS OF HOLLINS COLLEGE, VIRGINIA
NINETEEN SEVENTEEN



DEDICATION

DEAR MISS LOULIE M. SNEAD:

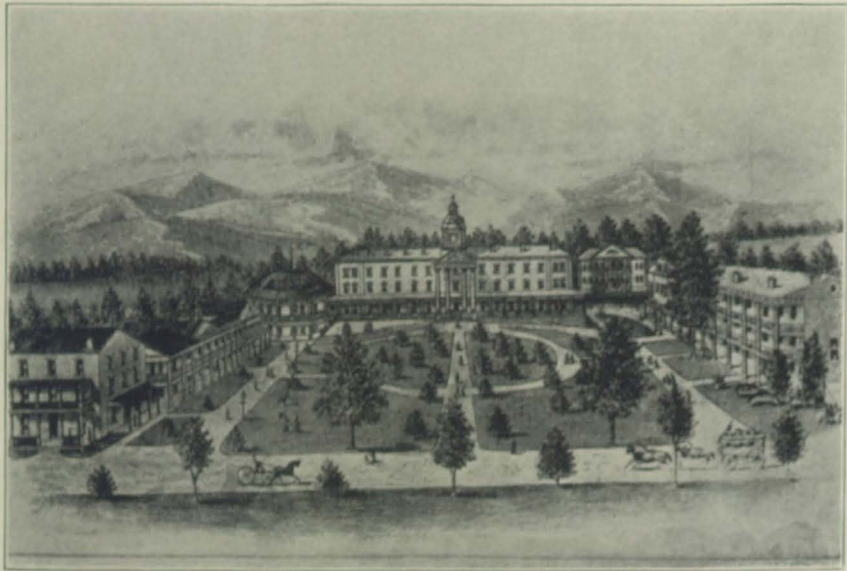
YOU'VE BEEN AWAY FROM US FOR A WHOLE YEAR, AND THE HOLLINS GIRLS HAVE MISSED YOU. WE'VE LONGED FOR YOUR FRIENDLY COUNSEL AND HELP THAT NEVER FAILED US, EVEN THOUGH YOU MUST HAVE GROWN WEARY MANY TIMES WITH THE BURDENS WE BROUGHT TO BE SHARED. WE'VE MISSED YOUR HAPPINESS, YOUR ENTHUSIASM, YOUR UNTIRING ENERGY. THE FACULTY HAVE MISSED YOU AS A FELLOW-WORKER AND FRIEND—YES, ALL HOLLINS-LAND HAS MISSED YOU, AND NOW WE WANT YOU BACK. PLEASE ACCEPH THIS "SPINSTER" AS A PETITION—A PETITION BEGGING FOR YOUR RETURN, DEAR TEACHER OF SECOND "COMP."

JENNIE GOODWIN SNEAD.

CONTENTS

	PAGE
THE COLLEGE	7
FACULTY	23
CLASSES	29
SORORITIES	71
ORGANIZATIONS AND CLUBS	97
ATHLETICS	141
THE STAGE	153
HOLLINS COLLEGE CATALOGUE	161
ADVERTISEMENTS	185



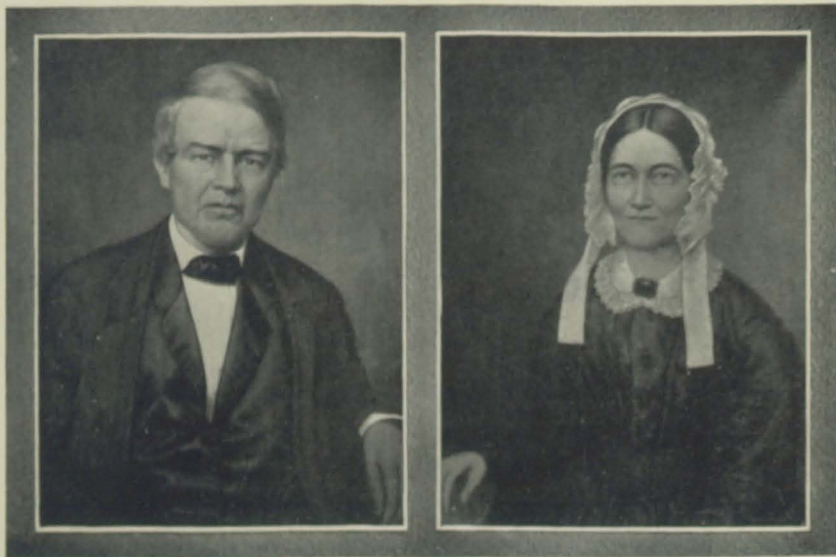


VALLEY UNION SEMINARY, 1842-1852



CHARLES L. COCKE





MR. HOLLINS

MRS. HOLLINS



HOLLINS INSTITUTE, 1855





HOLLINS, 1875



HOLLINS, 1890





THE GATE



HOLLINS COLLEGE, 1917





INTERIOR OF LIBRARY



CHAPEL, 1917





THE SPINSTER



Some Actual Extracts from the Minutes of the Valley Union Education Society

HAVING A BEARING UPON THE EARLY HISTORY OF HOLLINS COLLEGE

May 23, 1843.

Joshua Bradley, having, a few weeks since, originated a subscription for the purposes hereafter described, requested all gentlemen present at the Baptist meeting house near Salem, Roanoke County, to be organized into a society by the title of *Valley Union Education Society, who would comply with the terms set forth in said subscription. Whereupon the Rev. A. C. Dempsey was chosen President and Geo. P. Tayloe Treasurer and Secretary Pro Tem. The Rev. Joshua Bradley presented the following articles as a constitution for said society, which were unanimously adopted, viz:

* * *

ARTICLE 3

When incorporated they shall choose 13 Trustees, to whom deed or deeds shall be given of all property of every kind that is obtained by their agents or otherwise, said property never to be appropriated for any other purpose but for education of youth of all denominations of both sexes who may enter the institution at Botetourt Springs.

* * *

ARTICLE 5

This Society shall elect five of their number as directors to visit the institution frequently, confer with the President, hear the students examined and adopt such measures as will render the institution as useful as possible. Should the President or his associate teachers become unpopular, said directors shall call a meeting of the society or Board of Trustees and have them removed and others appointed.

* * *

ARTICLE 7

The Society shall elect one or more agents to raise funds to pay for the buildings and one hundred and six acres of land connected with the Botetourt Springs, and also to obtain a library and apparatus, that the students may have every facility to advance themselves in literary attainments.

September 6, 1847.

WHEREAS, the Valley Union Seminary combines in its location and accommodations, as well as in its facilities for affording instruction to youth of both sexes, advantages in many respects superior to most institutions in our State; and,

WHEREAS, the amount of patronage thus far realized has exceeded what might reasonably have been expected under existing circumstances; therefore,

*The Valley Union Seminary at Botetourt Springs had been opened in 1842.



Wm. L. Coe





THE SPINSTER



Resolved, That this Society has increased confidence in the enterprise and regards the institution as highly deserving public patronage;

Resolved, That the board be instructed to make any necessary repairs to the buildings and improve and enlarge the apartments occupied by the female pupils as soon as the condition of the treasury shall justify an appropriation to this object;

Resolved, That this Society regards the present laws regulating the intercourse between the male and female departments as highly judicious and that the faculty be requested never to make them less binding.

August 31, 1848.

On motion the following resolution was adopted: "*Resolved*, That should the McAdamized road leading from Salem to Buchanan now in contemplation pass through these premises, the present proprietor be instructed to make no charges for damages except on account of additional fencing."

May 19, 1853.

Resolved, That this Society express its high sense of the ability with which the affairs of the Valley Union Seminary have been conducted during the past year under its present instructors, and that they would hereby recommend the institution as worthy the patronage of all who desire their daughters to receive a liberal and accomplished education.

March 5, 1856.

An effort was next made to secure additional funds for improving the premises, especially the sulphur spring and enclosures, which resulted in the pledge of \$500 for that object.

The following is quoted from the catalogue of Hollins Institute, session 1855-6:

" . . . It was with peculiar satisfaction that the Society unanimously adopted at its late final meeting the proposition of Mr. John Hollins, of Lynchburg, accompanied as it was with a magnificent donation on his part, to place their institution under the control of a self-perpetuating Board of Trustees. This transfer has now been effected and a new charter secured. . . ."

COMMENCEMENT

The day of commencement and exhibition is the fourth of July. The exercises consist of conferring diplomas and certificates, the reading of essays by the graduates, and others, with the valedictory address of the principal.

In the afternoon there is a concert of vocal and instrumental music by the pupils in this department.



THE SPINSTER



EXAMINATIONS

The regular examinations occur near the close of session yearly. They take place in the presence of at least two of the BOARD OF INSTRUCTION, and of the parents or guardians of the pupils, should they desire to be present.

DAILY EXERCISES

An early hour the bell is rung for all to arise and prepare for the duties of the day. Thirty minutes thereafter the bell is again rung, when all assemble in the chapel for morning worship.

At 4 P.M. all the pupils and teachers assemble again for evening worship, and from the close of this exercise to early candle lighting the time is appropriate to recreation.

Saturday is devoted to rhetorical exercises and general reading.

REGULATIONS

4. *Young ladies will not be allowed to receive the "attentions" of young gentlemen while connected with this Institute.*

10. Persons coming to this place by way of the Virginia & Tennessee railroad should stop at Salem depot. An omnibus will run to that point daily for the first week of the session. Those who come by the "Valley stage" should stop at Cloverdale, two miles from the Institute.

May 23, 1860.

MEETING OF THE BOARD OF TRUSTEES OF HOLLINS INSTITUTE

WHEREAS, the Superintendent has informed this Board that Mrs. Ann Hollins has increased her individual subscription to the Institute, which, with the donation made by her deceased husband and other contributions made in former years, amount in the aggregate to \$17,500; therefore,

Resolved, That the repeated and princely liberality of Mrs. Hollins to this Institute has excited the warmest feelings of gratitude in its Trustees, and no doubt when announced will rejoice the hearts of all its patrons, while at the same time it constitutes a sure index of her own benevolence of heart and noble purpose;

Resolved, That Mr. W. A. Miller be directed to transmit this resolution with the best compliments of the Board to Mrs. Hollins and to procure a portrait of herself and, if possible, of her deceased husband, to be kept permanently in this Institute.

November 18, 1863.

On motion of Mr. Pitzer, the price of board and tuition and music was fixed at \$800 for the session of nine months, thus divided: Board, \$550; literary tuition, \$125; music tuition, \$125.



THE SPINSTER



March 4, 1864.

The regular meeting which was to have been held on the 16th of December, 1863, was not held in consequence of the presence of the enemy in the neighborhood on that day.

May 16, 1864.

3. *Resolved*, That prices for board and tuition for the current session having been fixed when provisions were more abundant and prices ranged far lower than at present, the Trustees reserve the right of increasing the prices after the 1st of August to such an extent as to furnish good fare and comfortable accommodations.

May 24, 1865.

On motion of Mr. Boothe a committee was appointed to examine Carven's Creek and report what ought to be done to stop its encroachment upon the grounds near the sulphur spring.

June 6, 1866.

On motion of Mr. Boothe, all claims against the Board of Trustees due in Confederate money were directed to be settled at the specie valuation at the time of incurring the debt.

July 23, 1873.

On motion of Dr. Tupper it was resolved that the Superintendent be authorized to substitute stoves instead of open wood fires.

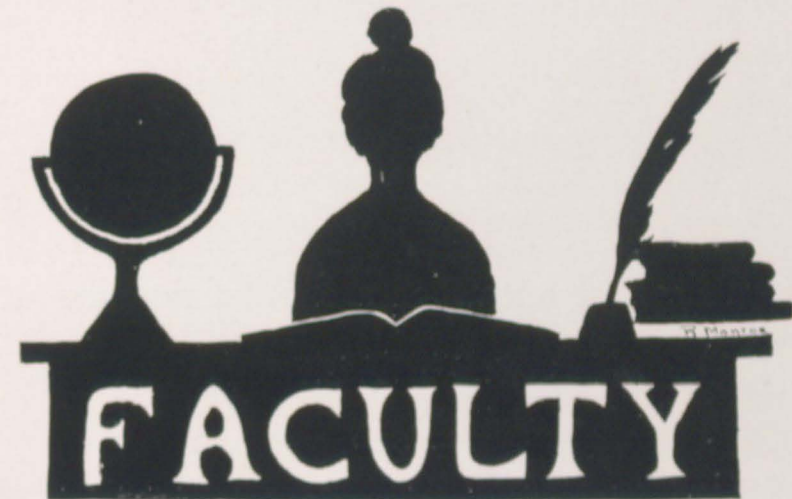
May 26, 1875.

Resolved, That the Board of Trustees in assuming their official duties under the amended charter desire to return their heartfelt thanks to Prof. C. L. Cocke for his judicious and wise performance of the responsible duties of his office. Believing that the present prosperity of this Institution and the promise of increased usefulness in the future is due mainly to his energy and efficiency, we not only congratulate him upon the result of his labors in the past, but pledge him our hearty support in carrying out his plans for the future.

MARY MASTERS TURNER.



THE SPINSTER



Board of Governors

LUCIAN H. COCKE, *Chairman*
MISS MATTY L. COCKE
JOSEPH A. TURNER
M. ESTES COCKE, *Secretary*
A. T. L. KUSIAN
MRS. ELLA R. COCKE
MRS. B. C. BARBEE



THE SPINSTER



Officers of Instruction and Administration

Session 1916-17

OFFICERS

MISS MATTY L. COCKE *President*
 LUCIAN H. COCKE *Vice-President*
 MISS M. F. PARKINSON *Lady Principal*
 JOSEPH A. TURNER *General Manager*
 M. ESTES COCKE *Secretary and Treasurer*



THE SPINSTER



Members

A. L. T. KUSIAN, LL.D.
 (University of Strasburg, Germany)
Professor of French, German, Spanish

F. A. CUMMINGS, A.B., A.M., M.A.
 (Wofford College; President of Graduate Club; Columbia University; Lecturer to Sen-Night Club, Brooklyn; Lecturer at Chautauqua Assembly, New York, 1909-1912.)
Professor of English Language and Literature

MISS A. C. TERRELL, A.B.
 (Hollins; Graduate Student in History)
Professor of History and Economics

M. ESTES COCKE, M.A.
 (University of Virginia)
Professor of Physics

CHARLES N. DICKINSON
 (University of Virginia)
Professor of Mathematics

ALLEN J. BLACK, M.D.
 (Medical College of Virginia)
Professor of Physiology; Resident Physician

GEORGE BRAXTON TAYLOR, D.D., B.A.
 (Mercer University; Richmond College)
Professor of English Bible; Resident Chaplain

ARTHUR V. BISHOP, M.A., Ph.D.
 (University of Virginia)
Professor of Latin and Greek

MISS THALIA S. HAYWARD, A.B.
 (Hollins; Graduate Student Harvard University)
Professor of Botany; Instructor in French

MISS MARY E. WILLIAMSON, A.B., M.A.
 (Hollins; Columbia University)
Professor of Philosophy and Psychology



THE SPINSTER



Members

MISS HARTLEY CLARKE EMBREY, L.I., A.B.
 (George Peabody College for Teachers; Graduate Student in
 Chemistry, Sorbonne, Paris; Conservatoire Nationale
 des Arts et Metiers; Graduate Student in
 Chemistry, University of Chicago)
Professor of Chemistry

MISS ALMA BOYD, A.B.
 (Converse; Graduate Student of University of Chicago)
Instructor in English

MRS. BARBARA BEHAN
 (Charlton Hall, London, England; Graduate Student of Eng-
 lish in Columbia University; Magazine Writer; Short
 Story Critic and Book Reviewer of "The
 Editor," New York City)
Instructor in English

MISS FRANCES GRACE BROWN, A.B., M.A.
 (Lake Erie College; University of Chicago.)
Instructor in Latin

MISS CORA M. BAIN, Ph.B.
 (University of Chicago)
Instructor in English

MRS. ERICH RATH, A.B.
 (Hollins)
Instructor in German

MISS MARGARET PHELAN SCOTT, A.B., A.M.
 (Hollins; Radcliffe)
Instructor in History

MISS RACHEL WILSON, A.B.
 (Hollins)
Instructor in French and Mathematics; Alumni Secretary

MISS MARION S. BAYNE
Librarian and Recorder



THE SPINSTER



School of Music

ERICH RATH
Director
 (Scharwenka Conservatory; Royal Academy Inst. for Church
 Music, Berlin)
Piano, Organ, Choir, Chorus

W. JENNER GILLUM, A.B.
 (Emil Liebling, W. S. B. Mathews, V. Heinze, Chicago;
 Leschetizky and Mme. Bree, Vienna)
Piano

MISS ADELAIDE LOUISE CAMPBELL
 (Edna A. Hall, Boston; Edmund J. Meyer; Charles Whitney
 Coombs; A. J. Cornell, New York; Elias Kalisky;
 Richard Loewe, Berlin)
Voice Culture

HENRY H. FUCHS, A.B., M.B.
 (Eugene Welten S. Laendaer; Dr. Rubner (violin); Dr. Emil
 Schren (piano); Graduate of Department of Music, Colum-
 bia University; Assistant to Prof. Rubner, Department
 of Music, Columbia University, 1909-14; Director
 Columbia University Philharmonic Society,
 1914-15; Lecturer Public Schools
 of New York)
Violin

MISS MAMIE P. SINGLETON, A.B.
 (Hollins; Music Graduate, Hollins; School of Music Peda-
 gogy, Northampton, Mass.)
Piano, Theory

MISS ROSE COX
 (Hollins)
Supervisor of Practice



THE SPINSTER



Art, Expression, Etc.

MISS ALICE E. RUMPH

(Student at Colorossal Academy, Paris; Chase School, New York; Normal Graduate of New York School of Fine and Applied Arts; Pupil of Charles Hawthorn and Elliott Dangerfield)

Drawing, Painting, Design, History of Art, Etc.

MISS CHARLOTTE A. PHILIP

(Graduate and Post-Graduate Student Leland Powers School, Boston)

Expression

MISS ANNE ADAMS

(Graduate Teachers' College, Columbia University)

Domestic Science

MISS ETHEL A. GROSSCUP, A.B.

(Goucher College; Graduate of New Haven Normal School of Gymnastics)

Physical Director

OTHER OFFICERS

MISS BESSIE K. PEYTON

Leader of Choir; Assistant Recorder

MISS W. M. SCOTT

Secretary to President

MISS BETTY G. DICKINSON

Assistant to General Manager and Secretary and Treasurer

MRS. J. P. BARBEE

Superintendent of Dormitories

MRS. HARRIET A. GRAHAM

Assistant Superintendent of Dormitories

MISS ELIZABETH U. KELLAM

Superintendent of Infirmary

MISS BLANCHE DUNLAP

Chaperone

MRS. A. C. BOLZER

Housekeeper

STUDENT ASSISTANTS

BIRDIE MAY JACKSON

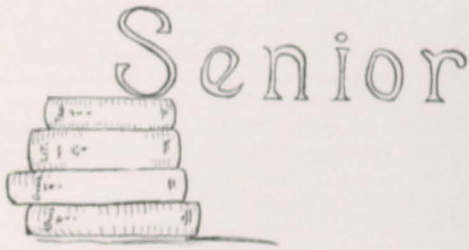
MILDRED HEARSEY

SUSAN BUCKNER

Assistants to Librarian



THE SPINSTER



Senior Class

Motto: Strive and hold cheap the strain

Flower: Yellow Rose

Colors: Black and Gold

Mascot: Black Cat

OFFICERS

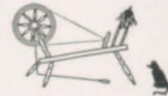
KATHARINE LEE JUDKINS	<i>President</i>
SARAH KATHARINE HUTTON	<i>Vice-President</i>
EDNA ANDERSON HURM	<i>Secretary and Historian</i>
BIRDIE MAY JACKSON	<i>Treasurer</i>
MARGARET WHITE	<i>Prophet</i>
JENNIE SNEAD	<i>Poet</i>

SPONSOR

MISS ALMA BOYD



THE SPINSTER



KATHARINE LEE JUDKINS
480 Park Avenue, New York, N. Y.

Lambda Gamma; Preparatory Department, 1912-1913; Gamma Omicron Pi, 1912-1914; Virginia Club; Euzelian; Dramatic Club; Cotillion Club; I-M-P; D-R-A-G-O-N; Masker; Vice-President of Freshman Class, 1913-1914; Captain of Freshman Basketball Team, 1913-1914; Sophomore Basketball Team, 1914-1915; Junior and Senior Baseball Team, 1915-1917; Yemassee Team, 1912-1917; Captain of Yemassee Team, 1914-1915, 1916-1917; Athletic Council, 1916-1917; *Spinster* Staff, 1916-1917; Pan-Hellenic Representative Lambda Gamma, 1916-1917; President of Senior Class, 1916-1917; Senior Representative of Founder's Day Committee, 1916-1917.

BEULAH MAE BENNETT

2702 Olive Street, St. Joseph, Mo.

Entered 1913-1914; Phi Mu Gamma, 1914-1916; Gamma Phi Beta; Euepian, 1916-1917; Treasurer of Euepian, 1914-1915; Choral Club, 1913-1914-1915; Secretary of Missouri Club, 1914-1915; Proficiency in Piano, 1915; Chairman of Devotional Committee of Young Woman's Christian Association.



THE SPINSTER



ANNIE ESTELLE DUFFY
Haymakertown, Va.

Entered Preparatory, 1912-1913; College, 1913-1917; Virginia Club, Associate Editor of Young Woman's Christian Association, 1915-1916; Associate Editor of Young Woman's Christian Association, 1916-1917; Junior Baseball Team, 1915-1916; Senior Baseball Team, 1916-1917.

ALLIE FECHTIG

1810 Princess Street, Wilmington, N. C.

Euepian, 1913-1917; Tar Heel Club, 1913-1916; President Tar Heel Club, 1916-1917; Basketball; Vice-President Junior Class, 1915-1916; Treasurer Y. W. C. A., 1915-1916; Tennis Manager, 1914-1916; Secretary Lee Evening, 1915-1916; President Lee Evening, 1916-1917; Member Euepian Debating Team, 1915-1916; Junior Representative on Executive Council, 1915-1916; Fire Chief, 1916-1917; Delegate to the Conference of the Southern Intercollegiate Association of Student Government, 1915-1917; President Student Government Association, 1916-1917.





THE SPINSTER



EDNA ANDERSON HURM

721 Main Street, Hamilton, Ohio

Entered 1913; Gamma Omicron Pi, 1913-1914; Lambda Gamma; Choir; Glee Club; Euepian; Magazine Staff, 1914-1915; Editor-in-Chief Magazine, 1915-1916, 1916-1917; Executive Council, 1915-1916, 1916-1917; President of Ohio Club, 1915-1916; Wagner Club; Euepian Captain Intersociety Debate; Secretary Senior Class, Monitor, 1916; Secretary of Executive Council; Vice-President of Lee Evening; Chairman of Nominating Committee; Music Proficiency, 1913-1914; Music Graduate, 1914-1915; President Yankee Club, 1916-1917; Captain Sophomore Class Debate, 1915; Euepian Open Meeting, 1913-1914, 1915-1916; Class Historian.

SARAH KATHARINE HUTTON

Abingdon, Va.

Entered Junior, 1915-1916; Kappa Delta; Virginia Club; Euzelian Literary Society; Secretary of Young Women's Christian Association, 1916-1917; Vice-President Euzelian Literary Society, 1916-1917; Vice-President of Euzelian Open Meeting; Vice-President of Senior Class; Member of Nominating Committee, 1917.



THE SPINSTER



BIRDIE MAY JACKSON

929 North Fulton Avenue, Baltimore, Md.

Euzelian, 1914-1915-1916-1917; Assistant Librarian, 1915-1916-1917; Maryland Club; President of Maryland Club, 1915-1916; Glee Club; Y. W. C. A. Cabinet; Secretary of Euzelian Literary Society, 1916-1917; Recorder of Point System, 1916-1917; Treasurer of Senior Class; Associate Editor of Y. W. C. A. Hand Book, 1915-1916-1917; Member of Nominating Committee of Y. W. C. A.; Junior Baseball Team; Sophomore Basketball Team; Senior Baseball Team.

HELEN WELLS MCCOY

Sistersville, W. Va.

Entered 1913-1914; Delta Delta Delta; Sigma Sigma Sigma; Euepian, 1914-1915-1916-1917; Yemassee Team, 1914-1915-1917; Freshman Team, 1914; Captain of Sophomore Team, 1915; Vice-President Y. W. C. A., 1916-1917; Secretary S. G. A., 1916; President of Junior Class; President of Pan-Hellenic, 1915; Vice-President Sophomore Class; Chairman of Poster Committee, 1916; President of West Virginia Club, 1915, 1917; Athletic Council, 1917; D-R-A-G-O-N, 1915, 1916, 1917; Mummy, 1914, 1915, 1916, 1917; Cotillion Club, 1914, 1915, 1916, 1917; President Cotillion Club, 1915; Masker; I-M-P; J-U-G; Daring Dodger.





THE SPINSTER



RUTH OSBORN MONROE
Brookneal, Va.

Entered 1913-1914; Gamma Omicron Pi, 1913-1914; Lambda Gamma, 1914-1917; Treasurer of Sophomore Class, 1914-1915; Assistant Business Manager of *Magazine*, 1914-1915; Secretary Junior Class, 1915-1916; Junior Member of Executive Council, 1915-1916; Business Manager of *Magazine*, 1915-1916; Chairman of Auditing Committee, 1915-1916; Captain Junior Baseball Team, 1915-1916; Senior Member of Executive Council, 1916-1917; Chairman Social Committee Y. W. C. A. Cabinet, 1916-1917; Euzelian; T-A-R; A-D-A; Joker; Dramatic Club; Virginia Club; Red Cheer Leader.

JENNIE GOODWIN SNEAD
Clifton Forge, Va.

Entered 1911; Gamma Omicron Pi, 1911-1914; Lambda Gamma, 1914-1917; Virginia Club; Preparation Department, 1911-1913; President Sophomore Class, 1914-1915; Executive Council, 1914-1915; Sophomore Basketball Team, 1914-1915; *Magazine* Staff, 1914-1915; Sophomore Debate, 1914-1915; *Spinster* Staff, 1915-1916; Junior Baseball Team, 1915-1916; Chairman Euzelian Program Committee, 1916; Editor-in-Chief of *Spinster*, 1916-1917; Secretary and Treasurer of Pan-Hellenic, 1916-1917; President Euzelian First Quarter; Class Poet, 1916-1917; Euzelian; D-R-A-G-O-N; Masker; Dramatic Club.



THE SPINSTER



ELIZABETH DURANT TERRILL
Roanoke, Va.

Euzelian; Virginia Club; Editor-in-Chief of Young Women's Christian Association Hand Book, 1915-1916; Editor-in-Chief of Young Woman's Christian Association Hand Book, 1916-1917; Member of Executive Council, 1916-1917; Member of Nominating Committee of Student Government Association, 1916-1917; Secretary and Treasurer of Athletic Association, 1916-1917; Junior Baseball Team, 1915-1916; Senior Baseball Team, 1916-1917.

MARGARET WHITE
Chester, S. C.

Entered 1915-1916; Member of Junior Class; Phi Mu; Euepian; Member of Student Government Nominating Committee, 1916-1917; *Magazine* Staff, 1916-1917; President of South Carolina Club, 1916-1917; Phi Mu Representative in Pan-Hellenic Association, 1916-1917; Class Prophet, 1916-1917.





THE SPINSTER



Forthfaring

As we reach the end of our striving to gain life's first milestone;
 As we leave those child days behind us and find ourselves alone,
 May we keep with us on our journey through the valleys and hilltops of life
 Your gifts, O Alma Mater, to brave the world's tempest and strife.
 We take for an armor the wisdom which you have labored to give,
 And a helmet of womanhood's purity crested with light, and so live.
 Our shield of truth is emblazoned with a knowledge and love of the right;
 Our strength is the strength of the many, because it's instilled in your might.
 We wield the sword of ambition and the flaming lance of pure love
 On a steed of wing'd aspiration ever bearing us higher above—
 Then, leaving you, Alma Mater, who have fitted us safe for the fight,
 We'll travel the highways and byways, guided alone by your light;
 We'll meet the world's evil strongly and triumphing over its pain;
 We'll joyously bear on our banner, strive, and hold cheap the strain.

JENNIE SNEAD.



THE SPINSTER



Class of 1917

PAST AND FUTURE

Setting: Forest of Arden.

Time: Dusk on a summer's day.

Characters: Two Brownies seated on a toadstool.

FIRST BROWNIE: Guess what has happened!

SECOND BROWNIE: I've no India rubber imagination.

FIRST BROWNIE: The Class of 1917 has graduated at last.

SECOND BROWNIE: Hard on you, eh?

FIRST BROWNIE: Is it? I've had more fun out of that class than out of a wilderness of monkeys. All these years they thought they were pulling original stunts, and didn't know that I was master of ceremonies! (Laughing heartily.)

SECOND BROWNIE: Don't keep the laugh to yourself—let a fellow in on the joke.

FIRST BROWNIE: Oh, would you really like to know? (Impish laugh.) Catch me if you can. (Jumps off, chases around toadstool.)

SECOND BROWNIE: (Weary, mounts toadstool and beckons.) Come, let's make a bargain. You know I peer into the future.

FIRST BROWNIE (approaching, interested):

I will tell you all I know
 Of this funny passing show,
 If you the future will bestow.

(They seat themselves upon the toadstool.)

SECOND BROWNIE: I am all ears!

FIRST BROWNIE: 'Twas indeed a wonderful class! So athletic, so literary, so original, so delightful in social affairs! In this group of twelve I found all types, goodly subjects for my pranks.

SECOND BROWNIE: Oh, don't rave! On with your story. What did they do?

FIRST BROWNIE: Their fame began in athletics. When verdant Freshmen, they won the cup for basketball. The second year they repeated the valorous deed. How's that for you?

SECOND BROWNIE: Where were you?

FIRST BROWNIE: Inside the basketball, of course. When McCoy reached for the ball, I leaped into her hands, and tickled the fingers of the opposing goal so that they never made a basket. I gave to Helen the honor of the game, and she was lauded in fine style; but, come, what does the future hold for her?





THE SPINSTER



SECOND BROWNIE (shading eyes and peering into space): I see a motley crowd on a street corner. They press closely about a leader in the dark and somber garb of the Salvation Army. Helen McCoy, her eyes keen with enthusiasm over the subject, is exhorting the young to shun matrimony. "Go forth into the world," she cries, "and live a life of independence." (Both are convulsed with laughter.)

FIRST BROWNIE: The basketball was not the only athletic field on which 1917 starred. I see them now on the baseball diamond—Duffy, in the pitcher's box, confounding by her down curves the enemy at the bat. Monroe, catcher, signals to Duffy as she winds up for another shot. "Ball three—strike three—third man out!" yells the umpire, and the game is won. A very simple matter for these professionals!



SECOND BROWNIE: Professional is right! Ten years from now the fame of Christy Mathewson will be eclipsed, and we will hear only of Duffy, the pride of the Amazons, the woman champion of the baseball players of America!

FIRST BROWNIE: But what of Monroe? Does she sink into oblivion?

SECOND BROWNIE: Not exactly. Near Roanoke, in a marshy region, Ruth sets up a frog farm. Her animals will be famous not only for their fine flavor, but also for the quality of their voices. Ruth will spend many hours a day conducting her singing school, and the trained frogs will become an annual feature of the Rotary Gambol.

FIRST BROWNIE (jumps down; assumes a belligerent attitude and begins singing):

Everybody fight with me,
Everybody fight with me,
I've got ships and submarines and—

SECOND BROWNIE: Stop, spare us! (Shrieking) What occasioned such an outburst?

FIRST BROWNIE (ruefully): I was merely reminiscing. On Founders' Day, 1916, this class gave such an original stunt as has never been equaled at Hollins. All the famous characters were there—Kaiser Bill, Phlegmatic Cousin George, and Nick of Russia formed a belligerent trio. It's hard to say what would have happened if Ford and his Peace Party, including E. M. House, had not arrived in a brand-new 1842 Model. The entrance was most imposing. The Tin Lizzie approaches, the chauffeur impressively honks his wheezy horn, and the engine stalls.



THE SPINSTER



The chauffeur, Cass Judkins, descends to examine the mechanism, restarts the engine, and the journey is finished in triumph. Ford, our amiable Birdie May Jackson, pacifies



the crowned heads, and Colonel House, alias S. K. Hutton, says "Absolutely nothing."

SECOND BROWNIE: That's very unlikely the outspoken Hutton. Her future is truer to her characteristics. Seeing the folly of her former narrow views, she devotes her life to advancing the cause of

New Truths. She becomes an ardent Feminist, the Mrs. Pankhurst of 1930!

FIRST BROWNIE: But I dare say "Mr. Ford" leads a peaceful existence?

SECOND BROWNIE: While pursuing her M.A. at Columbia she will be fascinated by the lure of Broadway, and will give up her philosophical research and will decide to live a more exciting life. In other words, she becomes a dancer, and because of her grace and of the sweetness of her voice draws the attention of the great stage managers and soon becomes known as "Birdie of the Follies."

FIRST BROWNIE (clapping his hands): Hooray for Birdie! Starring first in the Ford Stunt, last in the front row of the Follies!

SECOND BROWNIE: I'll give you three guesses at Judkins' future.

FIRST BROWNIE: Oh, that's easy. She will marry Oscar or June or Skinny and live happily ever afterwards.

SECOND BROWNIE: Not a chance! In Fincastle she will open a young ladies' seminary, where the only rules are that no callers may be received, and the girls are not permitted to set foot out of the school from September till June.

FIRST BROWNIE: "Sic transit gloria mundi!" (Head in hands.)

SECOND BROWNIE: And that is not only the unexpected development. You know little Jennie Snead, the Hollins poet, whose "Violets and Sunsets" had a place in every magazine. Her future will be commonplace. In a remote Ohio town, where she used to spend her Christmas vacations,





THE SPINSTER



she is a fussy little seamstress. She dogs the footsteps of her former friends, insisting that they allow her to do their plain sewing.

FIRST BROWNIE (gloomily): This literary, athletic, original, capable, brilliant class, seems to be a fizzle as time goes on!

SECOND BROWNIE: Cheer up! Don't be a bromide. Satisfy yourself with their brilliant past, and I will see to their future.

FIRST BROWNIE (more cheerfully): They *were* great,—they came, they saw, they conquered! Remember the knock they gave the Literary Societies—they took nerve.

SECOND BROWNIE: To the organization called Lit.

Seventeen gave a hard hit,
But the worse of it all
They were run to the wall,
By Allie, who bade them exit.

FIRST BROWNIE: Say, don't steal my thunder, but come play your own part.

SECOND BROWNIE (mysteriously stirring imaginary caldron):

Into this boiling kettle black
Various ingredients I will pack;
My six senses will help me tell,
Where Allie Fechtig comes to dwell.

(Both dancing around caldron and singing):

Bubble and boil, and snake skin coil,
This charm shall all plans but the Ogre's foil.

SECOND BROWNIE: I see rising from this black steam a woman senator. Allie's term in Washington will be short, her popularity dwindles after she introduces the Fechtig Bill,

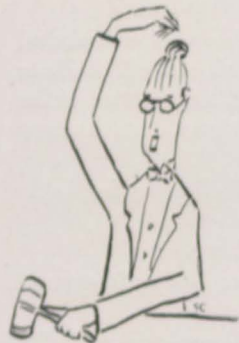
requiring all senators to take one hour's exercise per day. Not satisfied with this radical move, she attempts to introduce Prussian Militarism, the bill providing for a Woman's Regiment in the United States Army.

FIRST BROWNIE: You are going from the sublime to the ridiculous and back again.

SECOND BROWNIE (carelessly): Oh, the unexpected always happens, you know!

FIRST BROWNIE: I know one whose future cannot surprise us, for it was set before she left Hollins. Elizabeth Terrill will be a Chemist, of course.

SECOND BROWNIE: Elizabeth Terrill will be the Madame in a Beauty Parlor.



THE SPINSTER



FIRST BROWNIE: Say that in this ear.

SECOND BROWNIE: In Charlotte, N. C., is her establishment, with a laboratory adjoining, and she exercises all knowledge of coal-tar dyes to give hair the proper shade of purple, and cheeks the proper tint of pink. She sends hints to Birdie of the Follies, as to the proper make-up for her performances.

FIRST BROWNIE (thoughtfully): Now that I come to think of it, she displayed a frivolous streak at the Senior Reception on Founder's Day. That was some party, held in the Keller, and did credit to the social abilities of the class. All were resplendent that day, but none excelled Doc, in the gown she said her sister selected.

SECOND BROWNIE (strutting up and down):

In my reports you well can see
A large amount of veracitee.

FIRST BROWNIE (continuing): The success of that reception was topped off by the play in which the Seniors pulled off another original stroke. Real men were the employer, father and husband of the New Lady Bantock, due, we, think to the influence of coy Edna Hum.

SECOND BROWNIE: So she was always coy! She alone, of all the class, will win a husband by her side-long glances.



Through Hamilton one summer's day,
A Mormon took his weary way,
Urging men to take more wives,
And thus enjoy quite idle lives.
But one convert in this town was made,
Ed alone could he persuade
To return to Utah and join the parade
Of his seven wives, homely and staid.
FIRST BROWNIE: Alas, alack: thus is talent

buried! But speaking of barnyards, what will happen to Margaret White? Her laugh was the joke of the Senior table. Will it make her famous?



THE SPINSTER



SECOND BROWNIE: There will be no place for her laugh in her 2 x 6 apple store. In spite of pecuniary embarrassments, she will be supremely, for there will be apples to the right of her, apples to the left of her—in short, she will receive her M.A. as Master of Apples.

FIRST BROWNIE: The most lasting benefit this class bestowed was to establish the Hollins Sing. Thus was the many-sided interest of the class proven.

FIRST BROWNIE: "I've got a five-pound box of candy."

SECOND BROWNIE: "In 1842-2-2-2."

FIRST BROWNIE: "Sing, Sister, sing."

SECOND BROWNIE: "Oh, here comes Mr. Turner."

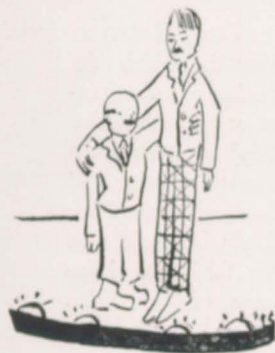
One and two together: "Oh, Hollins girls will cheer you every time."

FIRST BROWNIE: Beulah Bennett was always an enthusiastic songstress. How she did warble the ear-splitting ditties! I bet she goes on the vaudeville stage.

SECOND BROWNIE: Right you are for once! She and Miss Boyd, being inseparable, will perform a Mutt and Jeff act in Keith's Circuit, and the joke of it is that they will get away with it!

FIRST BROWNIE: Say, do you know, together, we'd make a great pair! Why, we could easily control the universe.

SECOND BROWNIE (enthusiastically): We'll do it!
(They dance off together singing.)



Together around the world we'll go,
Merrily, merrily, merrily;
Pulling the strings of this puppet show,
Verily, verily, verily.
Come, let's away
For a new play,
But—warily, warily, warily.

MARGARET WHITE, *Prophet*.
EDNA A. HURM, *Historian*.



THE SPINSTER



ON THEIR DIGNITY



THE SPINSTER



Junior Class

Colors: Red and White

Flower: Daisy

Motto: "Curemus Efficiemus."

OFFICERS

- LESLIE PATTERSON President
- MARTHA DIVEN Vice-President
- EDITH WILSON Secretary
- FLORENCE WATKINS Treasurer

SPONSOR

MISS RACHEL WILSON



THE SPINSTER



JUNIOR CLASS



THE SPINSTER



Junior Class Roll

EMILY MILDRED BATTLE Charlottesville, Virginia

Beta Sigma Omicron; Euepian; Virginia Club.

ANNA CAMPBELL 324 Church Avenue, Virginia

Gamma Phi Beta; Euzellan; Choir; Executive Council of Student Government Association; President of Y. W. C. A.; Virginia Club.

MARY NIXON DARDEN 217 Red Cross Street, Wilmington, North Carolina

Kappa Delta; North Carolina Club.

MARTHA DIVEN 1107 West Eighth Street, Anderson, Indiana

Gamma Phi Beta; D-R-A-G-O-N; Vice-President Junior Class; Junior Representative in Executive Council; Secretary of S. G. A.; "Spinster" Staff; Pan-Hellenic Representative
Gamma Phi Beta; Euzellan; A-D-A; Cotillion Club; Dramatic Club; Sphinx; Joker; Yankee Club.

BRANCH ABIGAIL FORD Lynchburg, Virginia

President of Virginia Club; Euzellan.

DORIS HUFF Roanoke, Virginia

Beta Sigma Omicron; Y. W. C. A. Cabinet; Magazine Staff; Pan-Hellenic Representative of Beta Sigma Omicron.

EDITH GRAHAM KELLY Bristol, Virginia

Gamma Phi Beta; Euzellan; Virginia Club.

LESLIE PATTERSON Chatham, Virginia

Beta Sigma Omicron; T-A-R; President of Junior Class; Y. W. C. A. Cabinet; Executive Council; Treasurer of Euzellan; Virginia Club.

FLORENCE CORDELIA WATKINS Norfolk, Virginia

Euzellan; Virginia Club.

MABEL GIDDING WILKIN 620 West 14th Street, Oklahoma City, Oklahoma

Kappa Delta; Magazine Staff; Texas Club; Cotillion Club.

EDITH WILSON New Canton, Virginia

Phi Mu; Virginia Club; Euepian; Business Manager of Magazine; Secretary of Junior Class.



THE SPINSTER



JUNIORS



Sophomore Class

Colors: Orange and Black

Flower: Yellow Rose

Motto: "Esse Quam Videre."

OFFICERS

- | | |
|----------------------------|----------------|
| MILDRED HEARSEY | President |
| FRANCES MCINTOSH | Vice-President |
| SALLY CHERRY | Secretary |
| LETTIE WITHROW | Treasurer |

SPONSOR

MISS CORA BAIN

HONORARY MEMBER

MISS MARIAN S. BAYNE



SOPHOMORE CLASS



THE SPINSTER

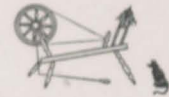


Sophomore Class Roll

- NORAH ANDERSON 531 South Fountain Avenue, Springfield, Ohio
Lambda Gamma; Mummy; Joker; "Spinster" Staff; Yankee Club; Buckeye Club.
- ADELAIDE CAMILLE BASS South Boston, Virginia
Euzellian; Virginia Club.
- DOROTHY BARCLAY Louisville, Kentucky
Euzellian; Kentucky Club.
- MARY GILES BELLAMY 323 South Third, Wilmington, North Carolina
Kappa Delta; Euzellian; Chairman of Athletic Association; Captain of Mohican Team;
D-R-A-G-O-N; Sphinx; Tar Heel Club.
- SALLY TATE CHERRY Chatham, Virginia
Euepian; Secretary Sophomore Class; Virginia Club; Magazine Staff.
- ELSIE EVANS Eagle Pass, Texas
Kappa Delta; T-A-R; Magazine Staff; Y. W. C. A. Cabinet; Yemassee Team; President of
Texas Club.
- EVELYN FISHBURNE Thirteenth Street, Roanoke, Virginia
Lambda Gamma; T-A-R; Mummy; Joker; Treasurer of Student Government Association;
Virginia Club; Y. W. C. A. Cabinet.
- SALOME HADAWAY 26 Baden Place, New Rochelle, New York
Lambda Gamma; T-A-R; Sphinx; Masker; Magazine Staff; Treasurer Euepian Society; Choir;
Yankee Club.
- JOSEPHINE HANCOX 621 Westover Avenue, Norfolk, Virginia
Beta Sigma Omicron; Euepian; Virginia Club; Yemassee Team.
- MILDRED HEARSEY 81 North Grove Street, East Orange, New Jersey
Delta Delta Delta; T-A-R; Euepian; Magazine Staff; President Sophomore Class; Yemassee
Team; Executive Council; Secretary Lee Evening; Mummy; Masker; Yankee Club; Assistant
Librarian.
- ELIZABETH JOHNSON 419 Scioto Street, Urbana, Ohio
Lambda Gamma; Sphinx; Ohio Club; Euzellian; Joker.
- GABRIELLE JOHNSON Newman, Georgia
Beta Sigma Omicron; Euepian; Georgia Club.
- KATHERINE JOHNSON 229 Le Flore Avenue, Clarksdale, Mississippi
Euzellian; Mohican Team; President of Mississippi Club.



THE SPINSTER



Sophomore Class Roll—Continued

- DOROTHY JONES Newman, Georgia
Beta Sigma Omicron; T-A-R; Mummy; Euepian; Pan-Hellenic Representative for Beta
Sigma Omicron; Blackbird; Secretary of Georgia Club.
- FRANCES MCINTOSH 1501 Lady Street, Columbia, South Carolina
Gamma Phi Beta; T-A-R; Euzellian; South Carolina Club; Magazine Staff; Assistant Busi-
ness Manager of The "Spinster;" Vice-President of Sophomore Class.
- ANNE MONTAGUE 4 Ladson Street, Charleston, South Carolina
Lambda Gamma; Yemassee Team; Joker; Euepian; South Carolina Club.
- LUISE RATH Hollins, Virginia
T-A-R; Euzellian; Virginia Club; Mohican Team; Executive Council; Y. W. C. A. Cabinet;
Assistant Chairman Athletic Association; Sphinx; Joker; Cotillion Club; Choir; Choral Club.
- GRACE ELIZABETH SIMPSON Tyler, Texas
Euepian; Texas Club.
- DOROTHY ALICE THOMPSON Beaver, Pennsylvania
Euepian.
- ELIZABETH TINSLEY 121 East St. Catherine Street, Louisville, Kentucky
Kappa Delta; Euzellian; D-R-A-G-O-N; Mummy; A-D-A; Joker; "Spinster" Staff; Vice-
President of Kentucky Club; Dramatic Club.
- ELIZABETH TURNBULL 220 Park Place, Brooklyn, New York
Lambda Gamma; "Spinster" Staff; Yemassee Team; Choir; Masker; Secretary of Yankee
Club; Cotillion Club; Euzellian; Program Committee of Euzellian Literary Society.
- LETTIE WITHROW Dublin, Virginia
Beta Sigma Omicron; Treasurer Sophomore Class; Choir; Virginia Club.
- ESTHER WOOL Sewell Point, Norfolk, Virginia
Delta Delta Delta; Executive Council; Assistant Business Manager Hollins Magazine; Euzel-
lian; Virginia Club; T-A-R; Sphinx.



THE SPINSTER



Freshman



Freshman Class

OFFICERS

SUNSHINE POPE	<i>President</i>
MARIAN LECKY	<i>Vice-President</i>
VIRGINIA GLOVER	<i>Secretary</i>
MARGARET COX	<i>Treasurer</i>

SPONSOR

MISS SINGLETON



THE SPINSTER



FRESHMAN CLASS



THE SPINSTER



Freshman Class Roll

- MARGARET CLARK ALLEN Rosedale, Mississippi
Mississippi Club.
- MADGE ACKISS Virginia Beach, Virginia
Delta Delta Delta; Virginia Club.
- ABBIE LANE ANDERSON Louisville, Kentucky
Gamma Phi Beta; Euzelian Literary Society; Kentucky Club.
- JOSEPHINE BAILEY Senatobia, Mississippi
Mississippi Club.
- RUTH ELIZABETH BASTIAN Rochester, New York
Eueplan; Yankee Club.
- SUE COVINGTON BUCKNER Erlanger, Kentucky
Delta Delta Delta; T-A-R; Mummy; A-D-A; President Cotillion Club; Mohican Cheer Leader; President Kentucky Club; Chairman Euzelian Program Committee; Financial Treasurer Euzelian; Chairman Auditing Committee; Y. W. C. A. Cabinet; Chairman Euzelian Play Committee; Member of Executive Council; Treasurer Y. W. C. A.; Dramatic Club.
- FLORENCE ESTELLE BUNN 449 Vine Street, Chattanooga, Tennessee
Phi Mu; Euzelian.
- KATHRYN B. CHAPMAN Springfield, Ohio
Delta Delta Delta; Ohio Club.
- MARGUERITE CHAPMAN Indianola, Mississippi
Beta Sigma Omicron; Mississippi Club.
- ELLEN CHILES 31 Washington Street, East Orange, New Jersey
Lambda Gamma; El Kickda Cow; "Spinster" Staff; Athletic Council; Virginia Club.
- SALLIE WHITFIELD COCKE Roanoke, Virginia
- ELIZABETH M. CONNABLE Springfield, Ohio
Delta Delta Delta; Ohio Club.
- MARGARET BARLOW COX Portsmouth, Virginia
Delta Delta Delta; Treasurer Freshman Class; Vice-President Virginia Club; Euzelian Literary Society.



THE SPINSTER



Freshman Class Roll—Continued

- LUCILLE CRIM Phillippi, West Virginia
West Virginia Club.
- KATHERYNE DAVIS 572 Ridge Street, Newark, New Jersey
Beta Sigma Omicron; Yemassee Team; Euzelian; Yankee Club.
- BESSIE ENOS Louisa, Virginia
Eueplan; Virginia Club.
- VIRGINIA GLOVER Newman, Georgia
Delta Delta Delta; Secretary Freshman Class; Vice-President Georgia Club; Eueplan.
- MINNIE LYNETTE GRAHAM Atlanta, Georgia
- MARY RAMSEY HALLAWAY Smithfield, Virginia
Glee Club; Euzelian; Virginia Club.
- HELEN HARDWICKE Sherman, Texas
Lambda Gamma; Texas Club; Choral Club; Euzelian.
- RUTH W. HERRINGTON Roanoke, Virginia
Virginia; Eueplan.
- RUTH COBB HOLLAND Norfolk, Virginia
- SARAH HUNTER Clinton, South Carolina
Kappa Delta; Euzelian; South Carolina Club.
- GWENDOLIN JOHNSTON Bedford City, Virginia
Eueplan; Virginia Club.
- MARY LEE KEISTER 328 Sixth Avenue, Huntington, West Virginia
Euzelian; West Virginia Club.
- KATHLEEN HULL KELLY Bristol, Virginia
Gamma Phi Beta; Euzelian; Choral Club; Virginia Club.
- MARIAN LECKY 2621 Stuart Avenue, Richmond, Virginia
Lambda Gamma (Pledge); Vice-President Freshman Class; Euzelian; Joker; Sphinx; Virginia Club; Katy-did.
- NAOMI PEAK 420 West Breckinridge, Louisville, Kentucky
Kappa Delta; Kentucky Club.



THE SPINSTER



Freshman Class Roll—Continued

- SUNSHINE BONNER POPE 405 South Vine Avenue, Tyler, Texas
Delta Delta Delta; President Freshman Class; Eueplan; Texas Club.
- OLIVE BERRY PRINGLE Newman, Georgia
Beta Sigma Omicron; Eueplan; Georgia Club.
- RUBY LEE SAUNDERS Bedford, Virginia
Virginia Club.
- DOROTHY SMITH El Paso, Texas
Lambda Gamma; D-R-A-G-O-N; Sphinx; Masker; A-D-A; Texas Club; Executive Council;
Mohican Team.
- POLLY SMITH Waco, Texas
Eueplan; Texas Club.
- LUCY STERLING 338 Fifth Street, Baton Rouge, Louisiana
Kappa Delta; Mummy; Joker.
- FELICIA BEALL TAYLOR Lynchburg, Virginia
Phi Mu; F. F. V.; Eueplan; Virginia Club.
- MARJORIE WARD 127 South Munn Avenue, East Orange, New Jersey
Eueplan; Yankee Club.
- LOUISE WILLIS Orange, Virginia
- ALYS LEE WOOD Norfolk, Virginia
Eueplan; Glee Club; Virginia Club.



THE SPINSTER



FACULTY KODAKS



THE SPINSTER



IRREGULAR COLLEGE STUDENTS



THE SPINSTER



Irregular

Irregular Class

OFFICERS

- ANNE WILLINGHAM *President*
 ELIZABETH PRUIT *Vice-President*
 ESTHER ROUNDTREE *Secretary and Treasurer*

MEMBERS

- MARGARET ARMSTRONG Greensboro, North Carolina
 Delta Delta Delta; Eueplan; North Carolina Club; Joker; N-U-N.
- LILLIE MORROW ATCHISON Nashville, Tennessee
 Delta Delta Delta.
- EDITH MARIE BARNES 710 Ninth Avenue, Roanoke, Virginia
 Beta Sigma Omoron; Euzelian; Virginia Club; Blackbird.
- GUYON E. BARRON Van Alstyne, Texas
- BLANCHE BASSETT Bassetts, Virginia
- MABEL BASSETT Bassetts, Virginia
- MARGARET BAILEY Hendersonville, North Carolina
 North Carolina Club.
- SOPHIA BIRGE Sherman, Texas
- HELEN ROSE BIRDSONG 323 Pinne Street, Suffolk, Virginia
 Delta Delta Delta; Virginia Club; Eueplan; Choral Club; N-U-N; Mandolin Club.

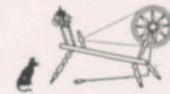


THE SPINSTER



Irregular Class Roll—Continued

- LAURA ALICE BLANTON 2213 West Grace Street, Richmond, Virginia
Virginia Club; Cotillion Club; Sphinx; Joker; Mohican Team.
- WILDA BLOUNT Union Springs, Alabama
Kappa Delta; Euzellian.
- MINNIE BREWER Clarksdale, Mississippi
Gamma Phi Beta; D-R-A-G-O-N; Eueplan; A-D-A; Mississippi Club; Sphinx.
- CORDELIA BRODBENT San Antonio, Texas
Lambda Gamma; Texas Club; Mummy; Euzellian; Choral Club.
- ELIZABETH MARTIN BULL 1822 Wyoming Avenue, Washington, D. C.
Lambda Gamma; Eueplan; Secretary and Treasurer of Virginia Club; Mohican Team; Joker;
Sphinx; Katy-did.
- MAE BUXTON Middleton Spa, Vermont
- KATHERINE E. CANADAY Anderson, Indiana
Gamma Phi Beta; Euzellian.
- MARIAN LEE COBBS Covington, Virginia
Gamma Phi Beta; Euzellian; Virginia Club.
- LIZBETH KATHLEEN COLLIER Hotel Pines, Pine Bluff, Arkansas
Phi Mu; Eueplan.
- JENNIE LOUISE CROWELL Columbus, Georgia
Phi Mu; Georgia Club; Eueplan.
- NELLE DORSET Sherman, Texas
Texas Club.
- MILDRED ESTES St. Augustine, Florida
Gamma Phi Beta; Euzellian.
- LOIS A. EVANS Bonham, Texas
Delta Delta Delta; Texas Club.
- GRACE FAIRCLOTH Dothan, Alabama
Alabama Club.
- SARAH FARMER Newman, Georgia
Beta Sigma Omicron; Eueplan; Georgia Club.
- MARY FOX Pine Bluff, Arkansas
Phi Mu.



THE SPINSTER



Irregular Class Roll—Continued

- EPSIE GIBSON FULLER Lumberton, North Carolina
North Carolina Club.
- MARY YANCEY GIBBONS Yancey, Virginia
Eueplan; Virginia Club.
- EMMIE C. GIESECKE 228 Washington Street, San Antonio, Texas
Texas Club; Choir; Choral Club.
- LUCILE MARIE GINN Ashland, Kentucky
Beta Sigma Omicron; Secretary and Treasurer of Kentucky Club; Cotillion Club; T. T. Club;
Choir.
- ELIZABETH GRAVES Yanceyville, North Carolina
North Carolina Club; Choir.
- MAURINE GRESHAM Indianola, Mississippi
Beta Sigma Omicron; Eueplan; Mandolin Club.
- ELIZABETH HALSELL Banham, Texas
Delta Delta Delta; Euzellian; Texas Club; Joker.
- NELLE HARTLEY Beaver, Pennsylvania
Lambda Gamma; Euzellian; Choir; Choral Club; Yankee Club; Pennsylvania Club; Katy-did.
- LOUISE HARWELL 629 Piedmont Avenue, Atlanta, Georgia
D-R-A-G-O-N; Sphinx; Mohican Team; A-D-A; Joker; Georgia Club.
- BIRDIE LEE HOLT Sherman, Texas
Choral Club; Texas Club.
- LOIS HURT Pounding Mill, Virginia
Virginia Club; Yemassee Team.
- NELLE HYDE Buchanan, Virginia
Virginia Club; Mandolin Club; Choir; Librarian of Choral Club.
- BESS JEFFREYS Chase City, Virginia
Lambda Gamma; Virginia Club; Euzellian.
- GABRIELLE JOHNSON Newman, Georgia
Beta Sigma Omicron; Eueplan; Georgia Club; Mandolin Club.
- ANNA CAPUTON JOHNSON East Orange, New Jersey
Yankee Club; Eueplan.



THE SPINSTER



Irregular Class Roll—Continued

- MARGARET M. KIRKPATRICK Lynchburg, Virginia
Lambda Gamma; 81 Kickda Cow; Virginia Club; F. F. V.
- ANNE M. KITCHIN Raleigh, North Carolina
Beta Sigma Omicron; North Carolina Club.
- KATHARINE ARCHER LEWIS Evansville, Indiana
Yankee Club; Eueplan.
- MAUDE BANNISTER MARTIN Toano, Virginia
Euzelian; Virginia Club.
- DOROTHY MILLER Franklin, Ohio
- CAMILLA BLANCHE MCKINNEY Durant, Oklahoma
- GWENDOLIN MILLER Fincastle, Virginia
- RACHEL MILLS 425 South Limestone Street, Springfield, Ohio
Beta Sigma Omicron; Euzelian; President of Ohio Club; Yankee Club; Yemassee Team;
Blackbird.
- PATTY MOSBY Somerville, Tennessee
Eueplan; Tennessee Club.
- GRACE AGNES NETHERLAND 1815 Belmont Road, Washington, D. C.
Phi Mu; Eueplan; Virginia Club.
- CORINNE NOELL Covington, Virginia
Gamma Phi Beta; Virginia Club.
- JERRY VIRGINIA OGDEN Torson Hotel, Muskogee, Oklahoma
Texas Club; Choral Club.
- ELSE LOUISE PANCOAST 102 Turner Street, San Antonio, Texas
Texas Club.
- EUGENIA COUNCIL PARKER Americus, Georgia
Phi Mu; Eueplan; Georgia Club.
- EMMA DORSEY PEAK Thierman Apartments, Louisville, Kentucky
Kappa Delta; Sphinx; Kentucky Club.
- ELIZABETH PRUIT 513 Nolas Avenue, Roswell, New Mexico
Eueplan; Lee Evening; Choir; Glee Club; Y. W. C. A. Cabinet; Dramatic Club; Joker; Texas
Club; Wagner Music Club.
- ROBERTA MADELINE REID Memphis, Tennessee
- RUBY RICHARDS Nassawadox, Virginia
Mohican Team; Virginia Club.
- ESTHER CLAIRE ROUNTREE Quitman, Georgia
Phi Mu; D-R-A-G-O-N; A-D-A; Mummy; Joker; Yemassee Team; Euzelian; President
Georgia Club; K. I.; B. B.



THE SPINSTER



Irregular Class Roll—Continued

- MARGARET LORIMER RUSSELL Wyncote, Pennsylvania
Pennsylvania Club.
- LILLIAN SHOTT 557 Raleigh Terrace, Bluefield, West Virginia
Kappa Delta; West Virginia Club; Sphinx; K. I.; Masker; T. T.
- MARYANNE STEGER Bonham, Texas
Delta Delta Delta; Texas Club; Euzelian.
- MARY FRANCES STEPHENS 218 East Taylor, Kokomo, Indiana
Delta Delta Delta; Eueplan; Yankee Club.
- KATHRYN LUCILLE STUART Ortega, Florida
Beta Sigma Omicron; Eueplan; President of Pan-Hellenic; Florida Club.
- MARGARET STUART Abingdon, Virginia
Gamma Phi Beta; Euzelian; Virginia Club.
- CARRIE LEE TEMPLIN Middlesboro, Kentucky
Gamma Phi Beta; Eueplan; Kentucky Club.
- FLORENCE THOMAS Bluefield, West Virginia
Vice-President West Virginia Club; Mandolin Club.
- ETHEL THOMAS Martinsburg, West Virginia
Euzelian; West Virginia Club.
- LUCILE MAY TILGHMAN Newport News, Virginia
Eueplan; Virginia Club.
- HELEN POINDEXTER TILLMAN Edgefield, South Carolina
Gamma Phi Beta; Eueplan; South Carolina Club.
- ANNA MAUDE VAN SAUN Asbury Park, New Jersey
Eueplan; Yankee Club; Choral Club; Choir.
- LAURA NANCY WALLACE 128 Maple Avenue, Covington, Virginia
Virginia Club; Glee Club.
- DOROTHY HINTON WALKER Algonquin Park, Norfolk, Virginia
Delta Delta Delta; Eueplan; Virginia Club.
- MILDRED WEEDON Troy, Alabama
Phi Mu; Euzelian.
- LURLINE WENDEL 502 West Campbell Avenue, Roanoke, Virginia
Eueplan; Virginia Club.
- MARGARET WEST Corsicana, Texas
Phi Mu; Texas Club; Masker; Choir; Sphinx; T. T. Club.
- ANNE WILLINGHAM Macon, Georgia
Phi Mu; Eueplan; Georgia Club; T-A-R; Magazine Staff; Sphinx.
- THELMA ELENOR WINESKIE High Point, North Carolina
North Carolina Club.
- LOUISE WOOLFOLK 5849 Bartlett Street, Pittsburgh, Pennsylvania
Kappa Delta; Pennsylvania Club; Yankee Club; Mohican Team.
- MARGARET WOOLFOLK 5849 Bartlett Street, Pittsburgh, Pennsylvania
Kappa Delta; Pennsylvania Club; Yankee Club.
- KATHARINE AUBREY WILHEIT Washington, Georgia
Phi Mu; Georgia Club; Eueplan.



THE SPINSTER



PREPARATORY STUDENTS



THE SPINSTER



Prep.

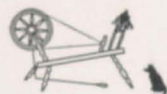


Preparatory Class Roll MEMBERS

JANIE MAE ABBEY	Webb, Mississippi
ETHEL ALEXANDER	Portsmouth, Virginia
Mummy.	
GLADYS ALEXANDER	Portsmouth, Virginia
Mummy; Matty L. Coker.	
VESTA ELISE ALLEN	Indianola, Mississippi
Matty L. Coker; Mississippi Club.	
FRANCES LORENA ANDREWS	305 Martin Place, Pine Bluff, Arkansas
Matty L. Coker.	
BONNEY ARMSTRONG	60 Stockton Avenue, San Jose, California
Matty L. Coker.	
LOUISE BAILEY	Springfield, Ohio
Joker; El Kickda Cow; Matty L. Coker; Yankee Club; Ohio Club.	
RACHEL BAILEY	Springfield, Ohio
Vice-President of Matty L. Coker; Joker; El Kickda Cow; Yankee Club; Ohio Club.	
JEAN ROSS BECKMAN	21 Eastwood Street, East Orange, New Jersey
El Kickda Cow; Matty L. Coker.	
ROSAMOND BERRY	504 Clay Street, Lynchburg, Virginia
Matty L. Coker; Virginia Club; Glee Club.	
DESIRE BROWN	Newport, Tennessee
Matty L. Coker.	
ESTHER MARION BRYANT	433 Pacific Avenue, Pittsburgh, Pennsylvania
Pennsylvania Club; Glee Club; Matty L. Coker.	
MARGARET BULLOCK	Columbus, Georgia
Georgia Club.	



THE SPINSTER



Preparatory Roll—Continued

- KATHLEEN WALES BURDEN 1684 Beacon Street, Brookline, Massachusetts
Yankee Club; Matty L. Coker; 81 Kickda Cow.
- ELIZABETH BUXTON 118 34th Street, Newport News, Virginia
Virginia Club; Matty L. Coker.
- STELLA CAMP Ocala, Florida
Matty L. Coker.
- PHYLLIS CLARKSON San Antonio, Texas
Cotillion Club; Mohican Team; Texas Club; Choir.
- BESSIE COX 501 Alabama Street, Bristol, Tennessee
- KITTY HULL CRUPPER Falls Church, Virginia
81 Kickda Cow; Matty L. Coker.
- MARGARET CUDDY Quitman, Georgia
Georgia Club; Matty L. Coker.
- GLENNA LUCILLE DIEHL 28 North Wittenberg, Springfield, Ohio
Ohio Club; Matty L. Coker; Yankee Club.
- CORRILLA EBERHARDT Danville, Kentucky
Matty L. Coker; Kentucky Club.
- FLORENCE EDRINGTON 1302 Pennsylvania Avenue
Texas Club; Matty L. Coker.
- LARUE FAULKNER North Tazewell, Virginia
Matty L. Coker; Virginia Club.
- MARY JANE GHOLSON Princeton, Kentucky
Matty L. Coker; Kentucky Club.
- GRACE GRIFFIN Peapack, New Jersey
Glee Club; Yankee Club.
- LOUISE HALSELL Purcell, Oklahoma
Treasurer Matty L. Coker; A-D-A; Joker; Glee Club.
- EVELYN HARRISON Wytheville, Virginia
Virginia Club; Glee Club; Matty L. Coker.
- LOUISE HAVERLAH Hallettsville, Texas
Matty L. Coker; Texas Club.
- ELOISE HENRY Oklawaha, Florida
- KATHERINE HERRING "Castleton," Lexington, Kentucky
Matty L. Coker; Kentucky Club.
- ELIZABETH HILLS 318 79th Street, Paducah, Kentucky
Blackbird; Joker; Glee Club; Kentucky Club; Matty L. Coker.



THE SPINSTER



Preparatory Roll—Continued

- MARY PRESTON HUGHSON Roanoke, Virginia
Matty L. Coker; Virginia Club.
- MAYNO HUNTER 916 Jordan Street, Shreveport, Louisiana
Matty L. Coker.
- EVELYN IRVING Charlottesville, Virginia
Matty L. Coker; Virginia Club; Joker; Cotillion Club.
- JEAN JESTER Corsicana, Texas
Matty L. Coker; Glee Club; Texas Club.
- KITTY LAWSON 513 Main Street, South Boston, Virginia
Virginia Club.
- MIRIAM LECKIE Welch, West Virginia
West Virginia Club; Matty L. Coker; Literary Society.
- JEMIMA MCCALLA Johnson City, Tennessee
- LYDIA ERYVN MASTERS Beachly, Pennsylvania
Matty L. Coker Literary Society; Pennsylvania Club.
- KATHERINE MATHEWS Clifton Forge, Virginia
Matty L. Coker Literary Society; Virginia Club.
- MARY B. MATTHEWS Atlanta, Georgia
Matty L. Coker Literary Society; Georgia Club; College Preparatory Executive Council.
- BETTIE PHILA MAULTSBY Whiteville, North Carolina
North Carolina Club.
- MARY MAUD McCARTY Eagle Lake, Texas
Matty L. Coker Literary Society; Texas Club.
- VIVIAN McCONIHAY Charleston, West Virginia
Matty L. Coker Literary Society; Mummy; Joker; A-D-A; West Virginia Club; Mohican Team.
- VIRGINIA Y. MONTAGUE Crozet, Virginia
Matty L. Coker Literary Society; Virginia Club.
- MARGARET MORTON Knoxville, Tennessee
Matty L. Coker Literary Society.
- MARY ALICE PARISH 3918 Mt. Vernon Street, Houston, Texas
Matty L. Coker Literary Society; Texas Club; Cotillion Club.
- KATHARINE B. POWELL Chester, Pennsylvania
81 Kickda Cow; Yankee Club; Masker; President of Pennsylvania Club; Matty L. Coker Literary Society.
- CARAMA PUGH Shreveport, Louisiana
- GERTRUDE R. RATH Hollins College, Hollins, Virginia
Virginia Club; Choir; Mohican Team; Matty L. Coker Literary Society; Katy-did.



THE SPINSTER



Preparatory Roll—Continued

- OIDA RISNER 1148 North Broadway, Knoxville, Tennessee
Matty L. Cocks Literary Society.
- HANNAH RODMAN Norfolk, Virginia
Matty L. Cocks Literary Society; Virginia Club.
- ETHEL VIRGINIA RUSSELL Ocean Springs, Mississippi
Matty L. Cocks Literary Society; Mississippi Club; Yemassee Team.
- ELAINE SAUVAGE Glen Ridge, New Jersey
Matty L. Cocks Literary Society; Glee Club; Yankee Club.
- ALVA LILLIAN SCHOONMAKER Newark, New Jersey
Matty L. Cocks Literary Society; Yankee Club.
- MARY MARGARET SIMPSON Hamilton, Canada
Choir; Glee Club.
- MADELAINE VIRGINIA SIMPSON Hamilton, Canada
Choir; Glee Club.
- VIRGINIA H. SMITH Winchester, Virginia
Virginia Club; Katy-did; Matty L. Cocks Literary Society.
- AILEEN LAURAEETTE SCRRELS Bulzoim, Mississippi
Matty L. Cocks Literary Society; Glee Club; Mississippi Club.
- JANE STANLEY 1386 Burdette Avenue, Cincinnati, Ohio
Matty L. Cocks Literary Society.
- PAULINE STAFFORD Care Oklahoman, Oklahoma City, Oklahoma
D-R-A-G-C-N; Collier Club; Ephrax; K. L.; Matty L. Cocks Literary Society; Masker.
- LOUISE TAYLOR 668 South McLean Blvd., Memphis, Tennessee
Matty L. Cocks Literary Society; Mummy; Joker.
- MILDRED ELIZABETH THOMPSON Leland, Mississippi
Matty L. Cocks Literary Society.
- MARY REID TAYLOR Wilmington, North Carolina
Matty L. Cocks Literary Society; El Kiekda Cow; North Carolina Club.
- JOSEPHINE WADE Quitman, Georgia
Matty L. Cocks Literary Society; Georgia Club.
- ROSE CASSANDRA WARD Smithfield, Virginia
Matty L. Cocks Literary Society; Virginia Club.
- CATHERINE MCKINLEY WARE Sedalia, Missouri
Matty L. Cocks Literary Society.

The Gift Supreme

Day and twilight have come and gone, and now
The moon from some eternal place beyond
Our sight sails like a golden ship amidst
A drift of filmy mists, and turns
The waste sands to a sea of silver light.
Under the sapphire sky and starry night
There came a camel and a traveler—
The beast with slow and rhythmic sway advanced.
Yet not alone were they with night and space,
For on the quickly cooling desert sands
A figure, prostrate, silent, lay.
The wanderer marked the beat of camel's feet
With plaintive song; and, gazing heavenward,
Yet saddened by th' eternal silence of
The great expanse, sees not the prostrate form.
The beast, with native instinct, paused
And patient stood. The traveler, wakened from
His dream, looked down, and seeing there a face
And form with beauty graced like that of some
Unhappy god, descended.
The man bent closer, then withdrew in awe
And wonder; for the moon revealed to him
A face so lovely in his chiseling,
So proud, and yet so pleading, tender, sad:
The face to wear among the world of men,
A mask of sternness;
Yet but to hide the inner self, afraid
Of revelation; it was a face whereon
The soul, oppressed with some deep grey, had, in
The sacredness of silence, struggled through
The mask of sternness, and sat throned about
The mouth and eyes. The traveler's gaze grew
soft,
And full of pity: "Flesh or spirit art thou?"
As from a tomb, a moaning voice replied:
"As, neither am I; I am he who lives
Forever lonely, friendless, exiled from
The love of men. God gave me beauty, wealth,

And for these things men praised me, flattered,
called
Me proud, yet knew they never that my heart
Was warm. Alas! God gave me not the gift
To show to men my real self, deeming that
My life was full, they said: 'What cares he for
Our little lives?'"
Then, gazing sadly at the hand which pressed
Against his heart, he slowly opened it.
An odor strange and sweet and faint arose
Like that of withered rose leaves in a rose jar
Held. The traveler gazed within the out-
Stretched hand; the voice began:
"It was a lovely blossom, friendship's bloom;
But knew it not the color, warmth and love
Which, sipped from other blossoms, makes it live.
So cherished I this rose; but it and I
Must die, unloved and unremembered here."
The voice was hushed; the traveler, reverent, bent
And smoothed the jetty curls from off the face;
Then rose and mounted, paused a moment there,
Half waiting for the voice to speak again,
And break the lonely silence of the night.
But stillness reigned. The moon rode high and
shed
Its radiance as before.
The traveler, saddened, was the more that such
A grey should be when God in nature seemed
So perfect here; then thought him of a cause
For gladness, knowing that he lately pressed
The hand of one who called him friend, who said
"Until the death I'll know and love thee still."
The traveler bowed his head, then upward gazed
And breathed a prayer; in breathing, said: "O
God,
I thank thee for the gift that teaches me
To love and yet be loved."

ELMIE EVAN.



THE SPINSTER



In Memoriam



Rosa Pleasants Coker Duke

Born October 19, 1878

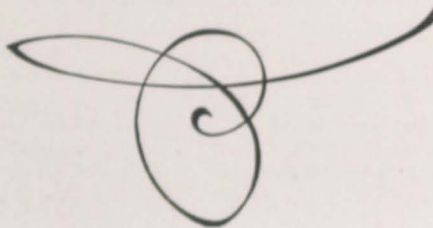
Died June 12, 1916



Rose Pleasants Hayward James

Born October 25, 1889

Died July 4, 1916



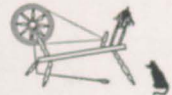
SPORTS



Phoebe
Hunter
'09



THE SPINSTER



Pan-Hellenic Council

OFFICERS

LUCILE STUART, B Σ O *President*
 JENNIE SNEAD, Α Γ *Secretary and Treasurer*

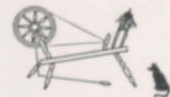
MEMBERS

DORIS HUFF, B Σ O
 DOROTHY JONES, B Σ O
 MARGARET WHITE, Φ Μ
 MARGARET WEST, Φ Μ
 ESTHER WOOL, Δ Δ Δ
 HELEN MCCOY, Δ Δ Δ
 MARTHA DIVEN, Γ Φ Β
 ANNA CAMPBELL, Γ Φ Β
 KATHARINE JUDKINS, Α Γ
 SALOME HADAWAY, Α Γ
 ELSIE EVANS, Κ Δ
 MABEL WILKIN, Κ Δ





THE SPINSTER



Kappa Delta

Organized 1895. Chartered 1902.

ROLL OF CHAPTERS

Gamma	Hollins College, Hollins, Va.
Epsilon	University of Louisiana, Baton Rouge, La.
Zeta	University of Alabama, Tuscaloosa, Ala.
Eta	Hunter College, New York, N. Y.
Theta	Randolph-Macon Woman's College, College Park, Va.
Lambda	Northwestern University, Evanston, Ill.
Mu	Millsaps College, Jackson, Miss.
Omicron	Illinois Wesleyan University, Bloomington, Ill.
Chi	University of Denver, Denver, Colo.
Rho	University of Wyoming, Laramie, Wyo.
Alpha Gamma	Coe College, Cedar Rapids, Iowa
Epsilon Omega	University of Kentucky, Lexington, Ky.
Kappa Alpha	State College for Women, Tallahassee, Fla.
Rho Omega Phi	Judson College, Marion, Ala.
Phi Tau	Bucknell University, Lewisburg, Pa.
Phi Epsilon	Colorado Agricultural College, Ft. Collins, Colo.
Sigma Alpha	Southern Methodist College, Dallas, Texas
Sigma Delta	Trinity College, Durham, N. C.
Sigma Sigma	Iowa State College, Ames, Iowa
Omega Xi	University of Cincinnati, Cincinnati, Ohio

Gamma Chapter

SORORES

MARY GILES BELLAMY	Wilmington, N. C.
WILDA BLOUNT	Union Springs, Ala.
LAURA BLANTON	Richmond, Va.
MARY DARDEN	Wilmington, N. C.
ELSIE EVANS	Eagle Pass, Texas
SARAH HUNTER	Clinton, S. C.
SARAH KATHERINE HUTTON	Abingdon, Va.
EMMA DORSEY PEAK	Louisville, Ky.
NAOMI PEAK	Louisville, Ky.
LUCY STERLING	Baton Rouge, La.
LILLIAN SHOTT	Bluefield, W. Va.
ELIZABETH TINSLEY	Louisville, Ky.
MABEL WILKINS	Oklahoma City, Okla.
LOUISE WOOLFOLK	Pittsburgh, Pa.
MARGARET WOOLFOLK	Pittsburgh, Pa.

HONORARY MEMBERS

MRS. CARRIE BOOZER MISS SINGLETON



THE SPINSTER



KAPPA DELTA SORORITY





THE SPINSTER



Phi Mu

Organized 1852. Chartered 1903.

ROLL OF CHAPTERS

Beta	Hollins College, Hollins, Virginia
Delta	Newcomb College, New Orleans, Louisiana
Xi Kappa	Southwestern University, Georgetown, Texas
Kappa	University of Tennessee, Knoxville, Tennessee
Lambda	Randolph-Macon College, Lynchburg, Virginia
Mu	Brenam College, Gainesville, Georgia
Xi	University of New Mexico, Albuquerque, New Mexico
Omicron	Buchtel College, Akron, Ohio
Pi	University of Maine, Orono, Maine
Rho	Hanover College, Hanover, Indiana
Sigma	Knox College, Galesburg, Illinois
Tau	Whitman College, Walla Walla, Washington
Upsilon	Ohio State University, Columbus, Ohio
Phi	University of Texas, Austin, Texas
Chi	University of Missouri, Columbia, Missouri
Psi	Adelphi College, Brooklyn, New York
Epsilon	Millsaps College, Jackson, Mississippi
Iota	Laurence College, Appleton, Wisconsin
Omega	Iowa Wesleyan College, Mt. Pleasant, Iowa
Beta Alpha	George Washington University, Washington, D. C.
Iota Sigma	University of Southern California, Los Angeles, Cal.
Epsilon Alpha	Southern Methodist University, Dallas, Texas

Beta Chapter

SORORES

ESTELLE BUNN	Chattanooga, Tenn.
KATHLEEN COLLIER	Pine Bluff, Ark.
JENNIE CROWELL	Columbus, Ga.
MARY FOX	Pine Bluff, Ark.
GRACE NETHERLAND	Washington, D. C.
EUGENIA PARKER	Americus, Ga.
ESTHER ROUNDTREE	Quitman, Ga.
MARY NCBLE SMITH	Spartanburg, S. C.
FELICIA TAYLOR	Lynchburg, Va.
MILDRED WEEDON	Troy, Ala.
MARGARET WEST	Corsicana, Texas
MARGARET WHITE	Chester, S. C.
KATHERINE WILHEIT	Washington, Ga.
ANNE WILLINGHAM	Macon, Ga.
EDITH WILSON	Farmville, Va.
MARY PARKER	Americus, Ga.

HONORARY MEMBER

MISS WILLIAMSON



THE SPINSTER



PHI MU SORORITY





THE SPINSTER



Beta Sigma Omicron

Founded December 12, 1888, Missouri University

ROLL OF CHAPTERS

Beta	Synodical College, Fulton, Mo.
Epsilon	Hardin College, Mexico, Mo.
Zeta	Centenary College, Cleveland, Tenn.
Eta	Stephens College, Columbia, Mo.
Lambda	Hamilton College, Lexington, Ky.
Xi	Central College, Lexington, Mo.
Pi	Hollins College, Hollins, Va.
Rho	Colorado Woman's College, Denver, Colo.
Sigma	Greenville College for Women, Greenville, S. C.
Tau	Lindenwood College, St. Charles, Mo.
Upsilon	Belhaven College, Jackson, Miss.

Pi Chapter

SORORES

EDITH BARNES	Virginia
EMILY BATTLE	Virginia
MARGUERITE CHAPMAN	Mississippi
KATHERYNE DAVIS	New Jersey
SARAH FARMER	Georgia
LUCILLE GINN	Kentucky
MAURINE GRESHAM	Mississippi
JOSEPHINE HANCOX	Virginia
DORIS HUFF	Virginia
GABRIELLE JOHNSON	Georgia
DOROTHY JONES	Georgia
ANNE KITCHEN	North Carolina
RACHAEL MILLS	Ohio
LESLIE PATTERSON	Virginia
OLIVE PRINGLE	Georgia
LUCILE STUART	Florida
LETTY WITHROW	Virginia
PATTY MOSBY	Tennessee



THE SPINSTER



BETA SIGMA OMICRON SORORITY

ΛΓ



THE SPINSTER



Lambda Gamma

Founded 1914

NORAH ANDERSON	Springfield, Ohio
CORDELIA BROADBENT	San Antonio, Texas
ELIZABETH BULL	Washington, D. C.
ELLEN CHILES	East Orange, N. J.
EVELYN FISHBURN	Roanoke, Va.
SALOME HADAWAY	N.w Rochelle, N. Y.
NELLE HARTLEY	Beaver, Penn.
HELEN HARDWICKE	Sherman, Texas
EDNA HURM	Hamilton, Ohio
BESS JEFFREYS	Chase City, Va.
ELIZABETH JOHNSON	Urbana, Ohio
KATHARINE JUDKINS	New York, N. Y.
MARGARET KIRKPATRICK	Lynchburg, Va.
MARIAN LECKY	Richmond, Va.
RUTH MONROE	Brookneal, Va.
ANNE MONTAGUE	Charleston, S. C.
DOROTHY SMITH	El Paso, Texas
JENNIE SNEAD	Clifton Forge, Va.
ELIZABETH TURNBULL	Brooklyn, N. Y.

FACULTY MEMBERS

- MISS MARGARET SCOTT
- MRS. TURNER
- MISS WILSON

HONORARY MEMBER

- MISS BAYNE



THE SPINSTER



LAMBDA GAMMA SORORITY





THE SPINSTER



Delta Delta Delta

Founded Thanksgiving Eve, 1888

Alpha Zeta Chapter

SORORES

MADGE ACKISS	Virginia
MARGARET ARMSTRONG	North Carolina
LILLIE ATCHISON	Tennessee
HELEN BIRDSONG	Virginia
SUE BUCKNER	Kentucky
MARGARET COX	Virginia
LOIS EVANS	Texas
FRANCES GRAVATT	Virginia
ELIZABETH HALSELL	Texas
MILDRED HEARSEY	New Jersey
HELEN MCCOY	West Virginia
SUNSHINE POPE	Texas
MARY ANNE STEGER	Texas
MARY FRANCES STEPHENS	Indiana
DOROTHY WALKER	Virginia
ESTHER WOOL	Virginia
VIRGINIA GLOVER	Georgia



THE SPINSTER



DELTA DELTA DELTA SORORITY





THE SPINSTER



Gamma Phi Beta

Founded November 11, 1874

ROLL OF CHAPTERS

Alpha	Syracuse University, Syracuse, N. Y.
Beta	University of Michigan, Ann Arbor, Mich.
Gamma	University of Wisconsin, Madison, Wis.
Delta	Boston University, Boston, Mass.
Epsilon	Northwestern University, Evanston, Ill.
Zeta	Goucher College, Baltimore, Md.
Eta	University of California, Berkeley, Cal.
Theta	University of Denver, Denver, Colo.
Iota	Barnard College, New York City
Kappa	University of Minnesota, Minneapolis, Minn.
Lambda	University of Washington, Seattle, Wash.
Mu	Leland Stanford, Jr., University, Palo Alto, Cal.
Nu	University of Oregon, Eugene, Ore.
Xi	University of Idaho, Moscow, Idaho
Omicron	University of Illinois, Urbana, Ill.
Pi	University of Nebraska, Lincoln, Neb.
Rho	University of Iowa, Iowa City, Iowa
Sigma	University of Kansas, Lawrence, Kansas
Tau	Colorado Agricultural College, Ft. Collins, Colo.
Upsilon	Hollins College, Hollins, Va.

Upsilon Chapter

SORES

ABRAE ANDERSON	Louisville, Ky.	MARION HARVEY	Tampa, Fla.
BEULAH BENNETT	St. Joseph, Mo.	EDITH KELLY	Bristol, Va.
MINNIE BREWER	Clarksdale, Miss.	KATHLEEN KELLY	Bristol, Va.
ANNA CAMPBELL	Roanoke, Va.	FRANCES MCINTOSH	Columbia, S. C.
KATHARINE CANADAY	Anderson, Ind.	CORINNE NOELL	Covington, Va.
MARION LEE COBBS	Covington, Va.	FRANCES ROCKE	Covington, Va.
MARTHA DIVEN	Anderson, Ind.	MARGARET STUART	Abingdon, Va.
MILDRED ESTES	St. Augustine, Fla.	CARRIE LEE TEMPLIN	Middlesboro, Ky.
HELEN TILLMAN	Edgefield, S. C.		



THE SPINSTER



GAMMA PHI BETA SORORITY



THE SPINSTER



KATHERINE LEE JUDKINS
QUEEN OF THE MAY



THE SPINSTER







THE SPINSTER



THE SPINSTER



Hollins Transformed

There've been some revolutions and it's changed quite a bit
 At Hollins in its lifetime, I'll admit;
 But for one short year's duration
 There's been more recreation
 Here than any other place I've ever hit.

As starters of the trouble, the Senior Class won fame
 By attempting cold-blood murder of the Lits—
 But for this all they got, it seems, was blame.

Then Dena's Tinker Tea Room not far away is found,
 Where eats and joyful company always do abound;
 And Stutzman's Inn is further up along the road to town.

Gustavus with his spanking span no longer may be seen;
 Instead our dashing Charlie lords it o'er the Gold and Green
 Of the Hollins automobile bus, huge, shining and serene.

The road no longer seems to be a very dangerous way,
 For from four o'clock till half past five the students there may play,
 And only the Preparative needs a chaperone today.

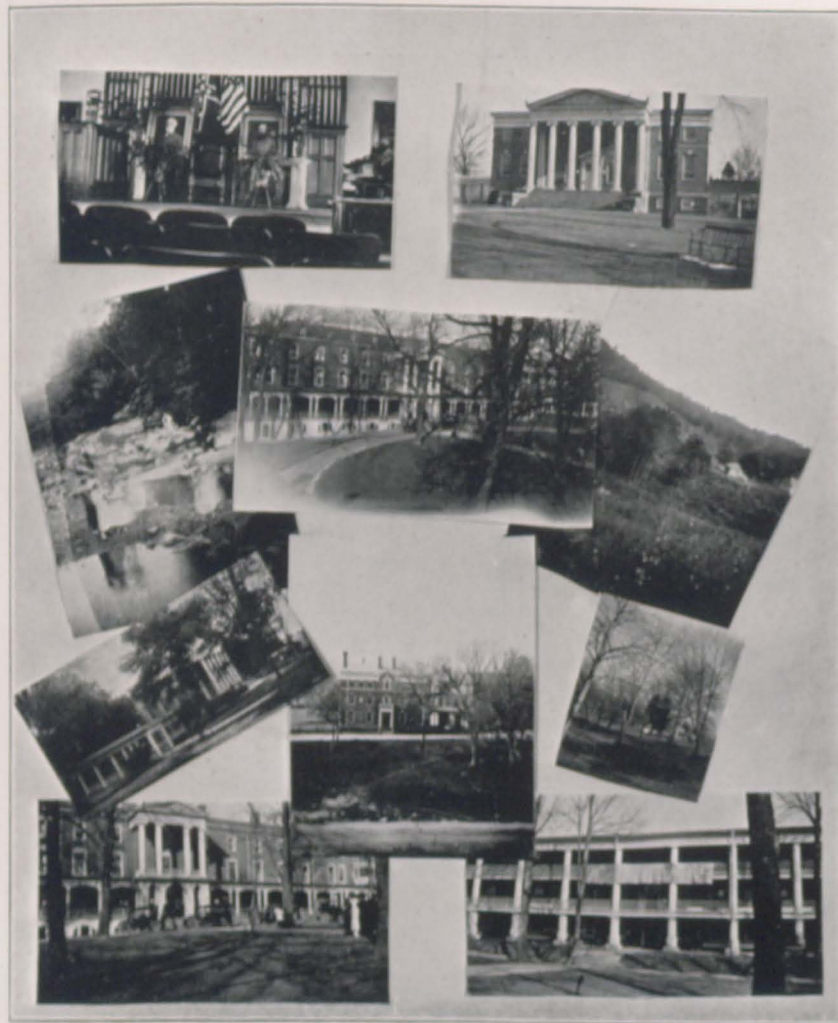
The campus has been turned into a ground for dress parade
 And the modest little student to a military maid
 As, chic in uniform, she drills to meet all who invade.

Now the most engrossing problem of the present Hollins girl,
 Whose young head is ever turning toward the giddy social whirl,
 Is that small two-point deduction that gives her marks a twirl.

But listen, girls, the biggest thing that's happened yet this year—
 Just how 'twas done we'll never know, but that it's so is clear—
 And the secret is—now, please don't tell—Mr. Rath, Mr. Turner, Mr.
 Cocke, Mr. Fuchs
 Will render Senior Dramatics a play a la de lux.



THE SPINSTER





THE SPINSTER



Student Government Association

OFFICERS

ALLIE FECHTIG *President*
 MARTHA DIVEN *Secretary*
 EVELYN FISHBURN *Treasurer*

EXECUTIVE COUNCIL

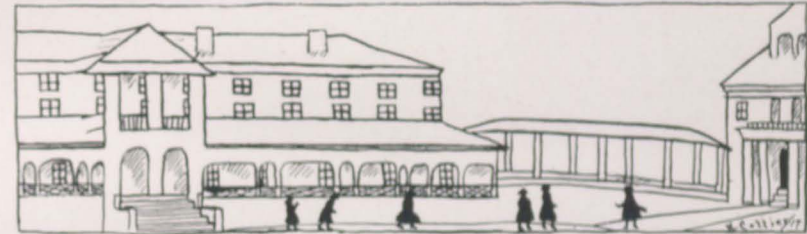
<i>Seniors</i>	<i>Juniors</i>
EDNA HURM	LESLIE PATTERSON
ELIZABETH TERRILL	MARTHA DIVEN
RUTH MONROE	ANNA CAMPBELL
<i>Sophomores</i>	<i>Freshmen</i>
ESTHER WOOL	SUE BUCKNER
LUISE RATH	DOROTHY SMITH

FACULTY ADVISORY BOARD

MISS MARY WILLIAMSON *Chairman*
 MISS MARIA F. PARKINSON MISS HARTLEY EMBREY
 MISS ALMA BOYD MISS THALIA HAYWARD
 THE PRESIDENT OF THE COLLEGE (EX-OFFICIO)



THE SPINSTER



Sunday-Y.W.C.A. What will you have? Good girls!

Young Women's Christian Association

OFFICERS

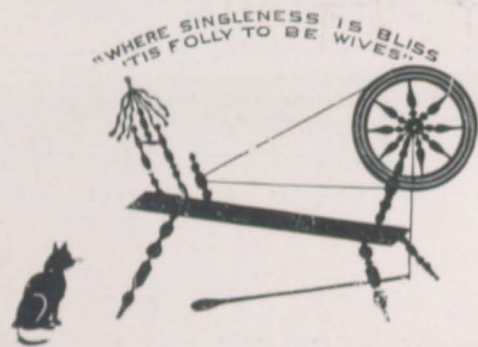
ANNA CAMPBELL *President*
 HELEN MCCOY *Vice-President*
 SARAH K. HUTTON *Secretary*
 SUE BUCKNER *Treasurer*

CABINET

BIRDIE MAY JACKSON
 BEULAH BENNETT
 LUISE RATH
 ELIZABETH FRUIT
 RUTH MONROE
 ELSIE EVANS
 EVELYN FISHBURN
 LESLIE PATTERSON
 DORIS HUFF



THE SPINSTER



Spinster Staff

- JENNIE SNEAD *Editor-in-Chief*
- RUTH MONROE *Business Manager*
- FRANCES MCINTOSH *Assistant Business Manager*
- KATHARINE JUDKINS *Associate Editor*
- MARTHA DIVEN *Associate Editor*
- ELLEN CHILES *Associate Editor*
- NORAH ANDERSON *Associate Editor*
- ELIZABETH TINSLEY *Associate Editor*
- ELIZABETH TURNBULL *Associate Editor*



THE SPINSTER



SPINSTER STAFF



Hollins Magazine Staff

EDNA HURM Editor-in-Chief

ASSOCIATES

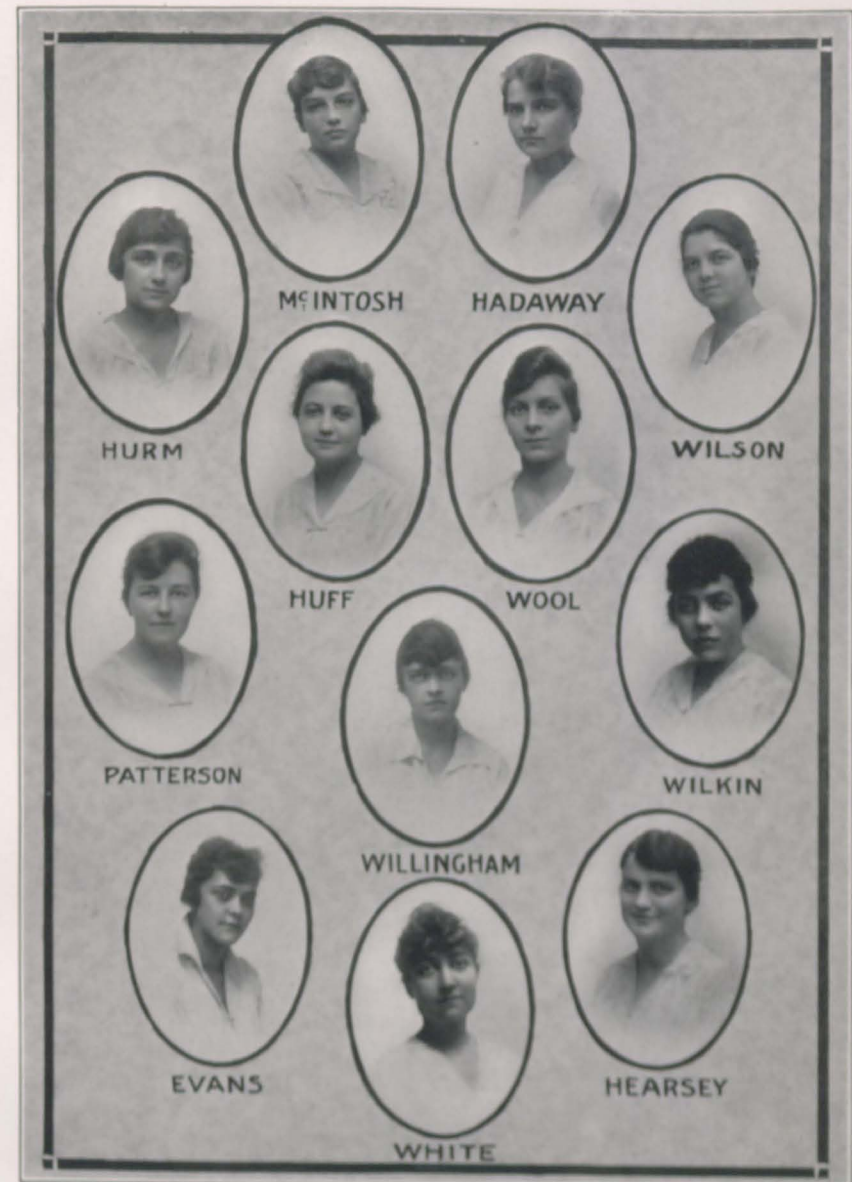
SALLY CHERRY
MILDRED HEARSEY
MARGARET WHITE
SALOME HADAWAY
LESLIE PATTERSON

ANNE WILLINGHAM
DORIS HUFF
FRANCES MCINTOSH
ELSIE EVANS
MABEL WILKIN

Alumnae Editor: RACHEL WILSON

Business Manager: EDITH WILSON

Assistant Business Manager: ESTHER WOOL



MAGAZINE STAFF



THE SPINSTER



Cuzelian Roll

ABBIE LANE ANDERSON
 DOROTHY BARCLAY
 ADELAIDE BASS
 MARY GILES BELLAMY
 WILDA BLOUNT
 CORDELIA BRODBENT
 SUE BUCKNER
 ESTELLE BUNN
 ANNA CAMPBELL
 KATHARINE CANADY
 MARION LEE COBBS
 MARGARET B. COX
 KATHARINE DAVIS
 MARTHA DIVEN
 MILDRED ESTES
 LOIS EVANS
 ELSIE EVANS
 EVELYN FISHBURN

ABIGAIL FORD
 EMMIE GIESECKE
 MARY HALLOWAY
 ELIZABETH HALSELL
 HELEN HARDWICKE
 NELLE K. HARTLEY
 MARION HARVEY
 DORIS HUFF
 SARAH HUNTER
 SARAH K. HUTTON
 BESS JEFFREYS
 BIRDIE JACKSON
 ELIZABETH JOHNSON
 KATHARINE JOHNSON
 KATHARINE JUDKINS
 MARY LEE KEISTER
 EDITH KELLY
 MAUDE MARTIN
 FRANCES McINTOSH

CAMILLE MCKINNEY
 RACHEL MILLS
 RUTH MONROE
 LESLIE PATTERSON
 LUISE RATH
 FRANCES ROCKE
 ESTHER ROUNTREE
 JENNIE SNEAD
 MARYANNE STEGER
 MARGARET STUART
 ETHEL THOMPSON
 HELEN TILLMAN
 ELIZABETH TINSLEY
 ELIZABETH TURNBULL
 FLORENCE WATKINS
 MILDRED WEEDEN
 MABEL WILKIN
 ESTHER WOOL



THE SPINSTER



Cuepian Roll

BEULAH BENNETT
 RUTH BASTIAN
 EMILY BATTLE
 ELIZABETH BULL
 SALLY CHERRY
 KATHLEEN COLLIER
 JENNIE CROWELL
 LILLIAN DICKERSON
 SARAH FARMER
 ALLIE FECHTIG
 MARY GIBBONS
 VIRGINIA GLOVER
 MAURINE GRESHAM
 SALOME HADAWAY
 JOSEPHINE HANCOX
 MILDRED HEARSEY

RUTH HERRINGDON
 RUTH HOLLAND
 EDNA HURM
 ANNA JOHNSON
 GABRIELLE JOHNSON
 DOROTHY JONES
 KATHERINE LEWIS
 DOROTHY MILLER
 ANNE MONTAGUE
 PATTY MOSBY
 HELEN MCCOY
 GRACE NETHERLAND
 EUGENIA PARKER
 SUNSHINE POPE
 OLIVE PRINGLE
 ELIZABETH PRUIT
 GRACE SIMPSON

MARY FRANCES STEPHENS
 MARY NOBLE SMITH
 POLLY SMITH
 LUCILLE STUART
 CARRIE LEE TEMPLIN
 DOROTHY THOMPSON
 ANNA VAN SAUN
 DOROTHY WALKER
 MARJORIE WARD
 MARGARET WEST
 KATHARINE WILHEIT
 ANNE WILLINGHAM
 EDITH WILSON
 LURLINE WINDEL
 MARGARET WHITE
 ALYS LEE WOOD



THE SPINSTER



Choral Club

OFFICERS

PROFESSOR ERICH RATH *Director*
 MISS MAMIE SINGLETON *Assistant Director*
 LUISE RATH *President*
 EDNA HURM *Accompanist*
 EMMIE GIESECKE *Secretary-Treasurer*
 NELLIE HYDE *Librarian*

MEMBERS

GUYON BARRON	EPSIE FULLER	JEAN JESTER
RUTH BASTIAN	GRACE GRIFFIN	KATHARINE KELLY
ROSAMOND BERRY	MARY HALLOWAY	VIRGINIA OGDEN
HELEN BIRDSONG	LOUISE HALSELL	ELAINE SAUVAGE
ESTHER BRYANT	HELEN HARDWICKE	MARY MARGARET SIMPSON
CORDELIA BRODBENT	EVELYN HARRISON	VIRGINIA SIMPSON
ELIZABETH BULL	BIRDIE LEE HOLT	ANNA VAN SAUN
SOPHIE BURGE	NELLE HARTLEY	LAURA WALLACE
MAE BUXTON		ALYS WOOD



THE SPINSTER



College Preparatory Association

OFFICERS

ELOISE HENRY *President*
 ESTHER BRYANT *Secretary*
 MARY M. SIMPSON *Treasurer*

EXECUTIVE COUNCIL

VIRGINIA MONTAGUE
 ELISE ALLEN
 MARY MATTHEWS
 GERTRUDE RATH
 ELOISE HENRY
 MARY M. SIMPSON
 ESTHER BRYANT



THE SPINSTER



The Matty L. Cocke Literary Society

- | | | |
|--------------------|-----------------------|------------------|
| GLADYS ALEXANDER | MARY GHOLSON | KATHARINE POWELL |
| ELISE ALLEN | LOUISE HALSELL | CARAMA PUGH |
| FRANCES ANDREWS | EVELYN HARRISON | GERTRUDE RATH |
| BONNY ARMSTRONG | LOUISE HAVERLAH | OUIDA RISNER |
| LOUISE BAILEY | ELOISE HENRY | HANNAH RODMAN |
| RACHEL BAILEY | KATHARINE HERRING | ETHEL RUSSELL |
| JEAN BECKMAN | ELIZABETH HILLS | ELAINE SAUVAGE |
| ROSAMOND BERRY | MARY PRESTON HUGHSON | ALVA SCHOONMAKER |
| DESIRE BROWN | MAYNO HUNTER | VIRGINIA SMITH |
| ESTHER BRYANT | EVELYN IRVING | AILEEN SCRRELS |
| KATE BURDEN | JEAN JESTER | JANE STANLEY |
| ELIZABETH BUXTON | MARIAM LECKIE | PAULINE STAFFORD |
| STELLA CAMP | LYDIA MASTERS | LOUISE TAYLOR |
| KITTY CRUPPER | KATHERINE B. MATTHEWS | MARY TAYLOR |
| MARGARET CUDDY | MARY B. MATTHEWS | SADIE TILLMAN |
| LUCILE DIEHL | VIRGINIA MONTAGUE | MILDRED THOMPSON |
| CORILLA EBERHARDT | MARGARET MORTON | ROSE WARD |
| FLORENCE EDRINGTON | VIVIAN MCCONIHAY | CATHERINE WARE |
| LARUE FAULKNER | MARY ALICE PARISH | JOSEPHINE WADE |
| | ELIZABETH PHILLIPS | |



THE SPINSTER



1842



1917

Alumnae Association

OFFICERS

- | | |
|-----------------------------------|-----------------------|
| MRS. ELLIE MARCUS MARX | President |
| MISS KATHARINE WATTS | First Vice-President |
| MRS. ERICH RATH | Second Vice-President |
| MISS MAMIE P. SINGLETON | Secretary |
| MRS. J. A. TURNER | Treasurer |



THE SPINSTER



The Master

(Taken from Shakespearean Pageant of 1916)

Ye that love beauty, ye that know the worth
Of masterful strong words that teach the heart
And form the will and fill the empty mind
With knowledge of a world beyond its ken;
Ye who have wept, and ye whom laughter moves,
Ye who have suffered sore through all your days—
Whoe'er ye be, ye folk, whate'er your lives,
We bid you rise; for lo! where Shakespeare comes!
He seemeth not alone, for at his name
The children of his genius throng to mind:
His women wise and whimsical, his men
More real, more human than if flesh and blood.
We who are gathered here today must pass
From out the sunshine and the ken of man,
The grave must claim us and oblivion soon
Blot out the too brief passage of our years.
Not so these others whom the Master there
Hath conjured into being for all time:
The centuries will pass and Hamlet still
Be Hamlet, Portia still be passing wise,
And fairest Juliet and her Romeo
Still teach despairing lovers how to die.

Loulie M. Snead.



THE SPINSTER



TINKER DAY KODAKS



WALTER KRASINSKI

DRAGON

LOUISE HARWELL

MARY GILES BELLAMY

ESTHER ROUNTREE

PAULINE STAFFORD

ELIZABETH TINSLEY

HONORARY MEMBER

MISS CROSSCUP



KATHARINE JUDKINS

HELEN MCCOY

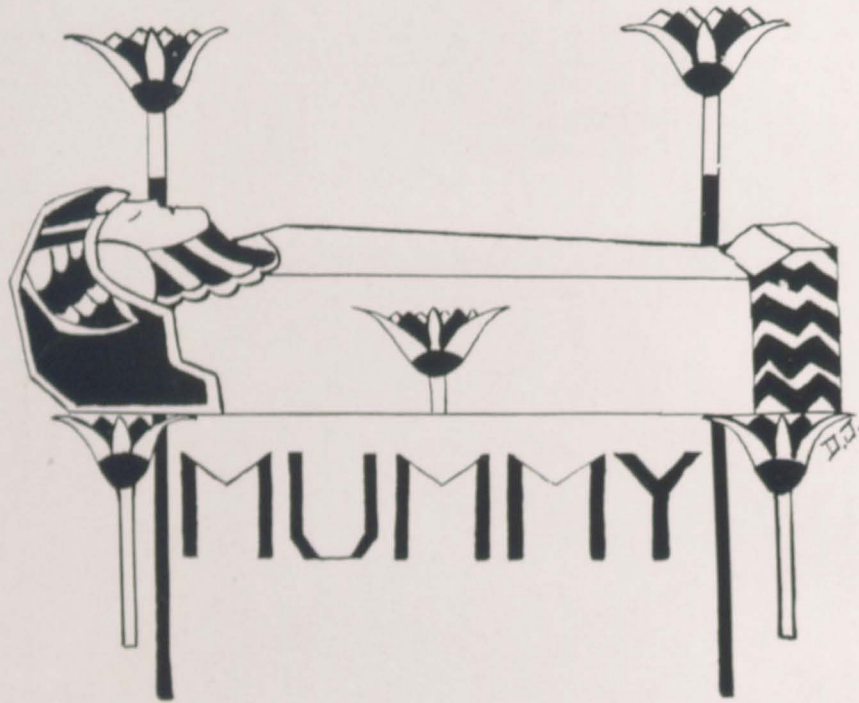
JENNIE SNEAD

MARTHA DIVEN

MINNIE BREWER

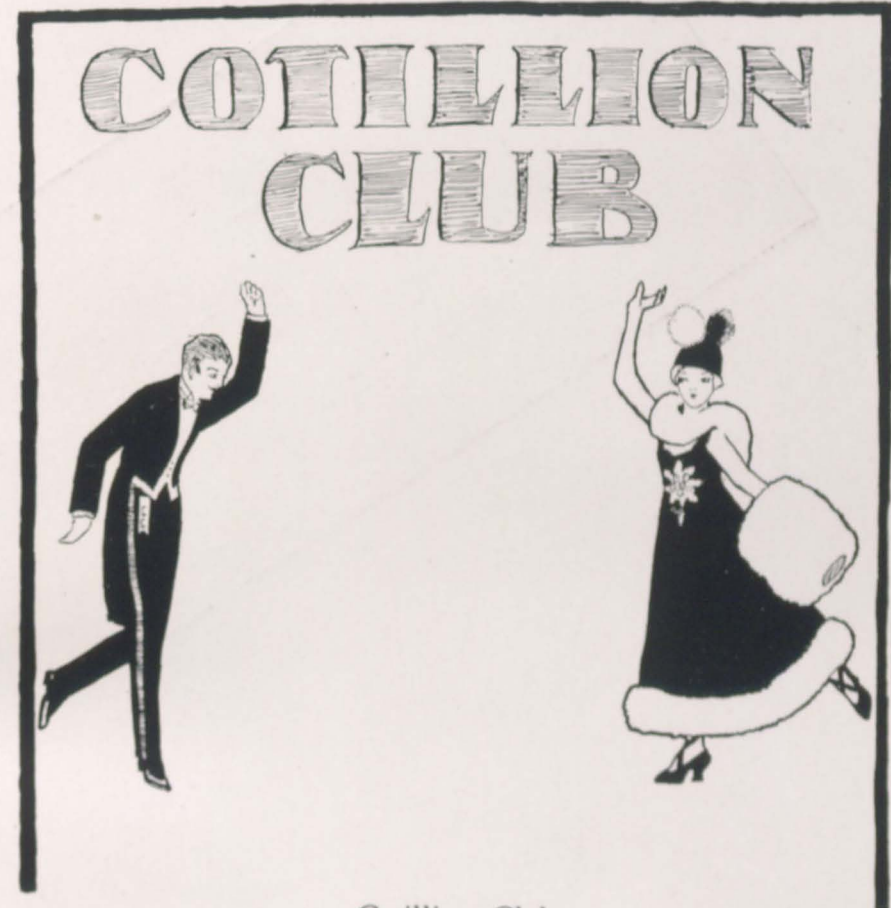
DOROTHY SMITH





Mummy

- | | |
|-------------------|-------------------|
| VIVIAN McCONIHAY | GLADYS ALEXANDER |
| ESTHER ROUNTREE | ETHEL ALEXANDER |
| NORAH ANDERSON | |
| DOROTHY JONES | |
| LOUISE TAYLOR | |
| LUCY STERLING | |
| KATHARINE JUDKINS | |
| MILDRED HEARSEY | |
| SUE BUCKNER | |
| ELIZABETH TINSLEY | |
| HELEN MCCOY | CORDELIA BRODBENT |
| EVELYN FISHBURN | |



Cotillion Club

OFFICERS

- | | |
|----------------------------|----------------|
| SUE BUCKNER | President |
| PAULINE STAFFORD | Vice-President |

MEMBERS

- | | |
|--------------|-------------|
| M. PARRISH | K. JUDKINS |
| E. WOOL | D. SMITH |
| L. GINN | E. IRVING |
| M. DIVEN | P. CLARKSON |
| L. DICKERSON | B. TURNBULL |
| L. BLANTON | L. RATH |



SUE BUCKNER
SALOME HADAWAY
EVELYN FISHBURN
LUISE RATH
ESTHER WOOL
MILDRED HEARSEY
DOROTHY JONES
FRANCES MCINTOSH
ELIZABETH TURNBULL

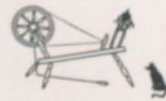
ANNE WILLINGHAM
ELSIE EVANS
LESLIE PATTERSON

HONORARY MEMBERS

MISS SINGLETON
MISS WILSON
MISS SCOTT
RUTH MONROE



THE SPINSTER



The ADA's

COUNCIL OF ANCIENTS

GRANDPA McCONIHAY

OLD LADY BREWER

OLD LADY MONROE

ADA'S IN COLLEGIO

ADA HARWELL
ADA SMITH
ADA BUCKNER

ADA HALSELL
ADA ROUNTREE

ADA TURNBULL
ADA TINSLEY
ADA DIVEN

ADA'S IN FACULTATE

ADA ESTES COCKE

ADA SUSIE COCKE AND FAMILY

ADA SINGLETON

MEMBERS ON WHOM THE HONORARY DEGREE OF ADA HAS BEEN CONFERRED

MRS. COBURN, A-D-A
LUCIAN COCKE, A-D-A

BEN GREET, A-D-A
HUGH HAGAN, A-D-A
WILLIS COBBS HAGAN, A-D-A

DINNIE RATH, A-D-A
CHARLES WASHBURN, A-D-A



THE SPINSTER



The Green and the Gold

Words by Phoebe Hunter, 1909

Music by Almah McConihay, 1910

I

O fair maiden Spring, what hue will you bring
To our cause from your own sunny sheen?
You have brought for your part the hue nearest
your heart
And spread Hollins' hillsides with Green.
And you, frosty Fall, the most brilliant of all,
What color for us do you hold?
You have laid your fair hand with its torch on
our land
And set our trees flaming with Gold.

II

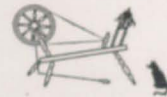
The Green and the Gold, we have loved it of old,
And to it we'll ever be true,
For the memory will last of the days that are past,
And linger, dear Hollins, with you.
For life, when we're young, is a song that is sung,
And must pass as a tale that is told,
But honor and praise, to the end of our days,
We will render the Green and the Gold.

III

And still at the thought of the good she has
wrought
Each heart must with gratitude thrill—
So to Hollins we'll sing till the mountainsides ring,
Our jewel of woodland and hill,
These are true, loyal friends that our college life
lends
And treasures of life manifold,
And may kind Fortune bless, with eternal success,
Our Hollins, the Green and the Gold.



THE SPINSTER



VIRGINIA CLUB



THE SPINSTER



Virginia Club

OFFICERS

ABIGAIL FORD *President*
 ELIZABETH BULL *Vice-President*

MEMBERS

ETHEL ALEXANDER	LAURA BLANTON	FELICIA TAYLOR
GLADYS ALEXANDER	MARION LEE COBBS	LOUISE WILLIS
ROSAMOND BERRY	MARY GIBBONS	ALYS WOOD
ELIZABETH BUXTON	BESS JEFFRIES	ADELAIDE BASS
KITTY CRUPPER	MARGARET KIRKPATRICK	SALLY TATE CHERRY
LARUE FAULKNER	CORINNE NOEL	EVELYN FISHBURN
EVELYN HARRISON	GRACE NETHERLANDS	LUISE RATH
MARY HUGHSON	RUBY RICHARDS	ESTHER WOOL
EVELYN IRVING	MARGARET STUART	LETTIE WITHROW
KITTY LAWSON	LAURA WALLACE	EMILY BATTLE
MIRIAM LECKIE	DOROTHY WALKER	ANNA CAMPBELL
KATHARINE MATTHEWS	LURLINE WENDEL	DORIS HUFF
VIRGINIA MONTAGUE	MADGE ACKISS	EDITH KELLY
GERTRUDE RATH	MARGARET COX	LESLIE PATTERSON
HANNAH RODMAN	MARY HALLOWAY	FLORENCE WATKINS
VIRGINIA SMITH	RUTH HERRINGDON	EDITH WILSON
ROSE WARD	RUTH HOLLAND	JENNIE SNEAD
EDITH BARNES	GWENDOLYN JOHNSTON	RUTH MONROE
BLANCHE BASSETT	KATHLEEN KELLY	ESTELLE DUFFY
MABEL BASSETT	MARIAN LECKY	KATHARINE JUDKINS
	RUBY SAUNDERS	



THE SPINSTER



Yankee Club

OFFICERS

EDNA HURM *President*
 BETTY TURNBULL *Secretary*

MEMBERS

NORAH ANDERSON	ELIZABETH CONNABLE	MARGARET RUSSELL
RUTH BASTIAN	KATHRYNE DAVIS	MARY MARGARET SIMPSON
LOUISE BAILEY	MARTHA DIVEN	VIRGINIA SIMPSON
RACHEL BAILEY	GRACE GRIFFIN	JANE STANLEY
JEAN BECKMAN	SALOME HADAWAY	ALVA SCHOONMAKER
ESTHER BRYANT	MILDRED HEARSEY	ANNA VAN SAUN
KATE BURDEN	ELIZABETH JOHNSON	MARJORIE WARD
KATHARINE CHAPMAN	LYDIA MASTERS	LOUISE WOOLFOLK
ELLEN CHILES	DOROTHY MILLER	MARGARET WOOLFOLK
	RACHEL MILLS	NELLE HARTLEY



THE SPINSTER



Texas Club

OFFICERS

ELMIE EVANS *President*
 PHYLIS CLARKSON *Vice-President*
 DOROTHY SMITH *Secretary*

MEMBERS

GUYAN BARRON	EMMIE GIESECKE	MARY ALICE PARISH
SOPHIE BIRGE	ELIZABETH HALSELL	SUNSHINE POPE
CORDELIA BRODBENT	ELMIE PANCOAST	GRACE SIMPSON
PHYLIS CLARKSON	HELEN HARDWICKE	DOROTHY SMITH
NELL DORSET	LOUISE HAVERLAN	POLLY SMITH
FLORENCE EDRINGTON	BIRDIE LEE HOLT	MARY ANNE STEGER
ELMIE EVANS	JEAN JESTER	MARGARET WEST



Georgia Club

OFFICERS

- ESTHER ROUNTREE *President*
 VIRGINIA GLOVER *Vice-President*
 DOROTHY JONES *Secretary*

MEMBERS

- | | | |
|-------------------|-------------------|-----------------|
| ANNE WILLINGHAM | LOUISE HARWELL | MARGARET CUDDY |
| LYNETTE GRAHAM | VIRGINIA GLOVER | SADIE TILLMAN |
| GABRIELLE JOHNSON | SARAH FARMER | MARY MATTHEWS |
| OLIVE PRINGLE | KATHERINE WILHEIT | ESTHER ROUNTREE |
| JENNIE CROWELL | LILLIAN DAVIS | DOROTHY JONES |
| EUGENIA PARKER | | MARY PARKER |



The Buckeye Club

OFFICERS

- RACHEL MILLS *President*
 ELIZABETH JOHNSON *Secretary and Treasurer*

MEMBERS

- NORAH ANDERSON
 RACHEL BAILEY
 LOUISE BAILEY
 LUCILLE DIEHL
 EDNA HURM
 DOROTHY MILLER
 ELIZABETH JOHNSON
 KATHERINE CHAPMAN
 ELIZABETH CONNABLE
- HONORARY MEMBER
 MR. TURNER MR. RATH



THE SPINSTER



Kentucky Club

OFFICERS

SUE BUCKNER *President*
 ELIZABETH TINSLEY *Vice-President*
 LUCILE GINN *Treasurer*

MEMBERS

ABBIE ANDERSON	LUCILE GINN	CARRIE LEE TEMPLIN
DOROTHY BARCLAY	ELIZABETH HILLS	ELIZABETH TINSLEY
SUE BUCKNER	EMMA DORSEY PEAK	CORILLA EBERHARDT
MARY GHOLSON	NAOMI PEAK	KATHERINE HERRING

HONORARY MEMBER

MISS RACHEL WILSON



THE SPINSTER



Tar Heel Club

OFFICERS

ALLIE FECHTIG *President*
 MARY NIXON DARDEN *Vice-President*
 ELIZABETH GRAVES *Secretary*

MEMBERS

MARGARET ARMSTRONG
 MARY G. BELLAMY
 ANN KITCHEN
 EPSIE FULLER
 MARY TAYLOR
 ALLIE FECHTIG
 PHILA MAULTSBY
 THELMA WINESKIE
 MARY NIXON DARDEN
 ELIZABETH GRAVES
 MARGARET BAILEY



South Carolina Club

OFFICERS

MARGARET WHITE *President*

MEMBERS

SARAH HUNTER
 FRANCES MCINTOSH
 ANNE MONTAGUE
 MARY NOBLE SMITH
 HELEN TILLMAN
 MARGARET WHITE

HONORARY MEMBERS

MISS BOYD
 MRS. GRAHAM
 MRS. BOOZER
 MR. CUMMINGS



Mississippi Club

OFFICERS

KATHARINE JOHNSON *President*
 ELISE ALLEN *Vice-President*
 MAURINE GRESHAM *Secretary and Treasurer*

MEMBERS

MARGARET ALLEN
 ELISE ALLEN
 JANIE MAY ABBEY
 JOSEPHINE BAILEY
 MINNIE BREWER
 MARGUERITE CHAPMAN
 MAURINE GRESHAM
 KATHARINE JOHNSON
 ETHEL RUSSELL
 AILEEN SORRELS
 MILDRED THOMPSON



THE SPINSTER



West Virginia Club

OFFICERS

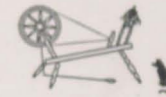
HELEN MCCOY *President*
 FLORENCE THOMAS *Vice-President*
 VIVIAN MCCONIHAY *Secretary and Treasurer*

MEMBERS

MIRIAM LECKIE
 ETHEL THOMPSON
 MARY LEE KEISTER
 LILLIAN SHOTT
 LUCILLE CRIM



THE SPINSTER



Pennsylvania Club

OFFICERS

KATHERINE POWELL *President*

MEMBERS

ESTHER BRYANT
 NELLE HARTLEY
 LYDIA MASTERS
 DOROTHY THOMPSON
 LOUISE WOOLFOLK
 MARGARET WOOLFOLK
 MARGARET RUSSELL



THE SPINSTER



The Web

The spinner sits beside her empty loom;
Her song is spun, her web of life's she's made.
She wove her dreams, her hopes, her joys, her fears,
Into the pattern—and for that she's paid.

And now she sits there, lonely, thru the years;
The cold white moon looks down, the silent stars
Have felt her loneliness, the sadness of that life
With all its loves, its sorrows, joys and scars.

And for the loved web that she had made,
She gave her life—she gave her very best;
But even love that seemed the brightest thread
Had faded, then had vanished with the rest.

But in the pattern, ravel'd now and torn,
Within its mazes gleams a wondrous thread,
The golden cord of friendships she had made,
And clustered 'round, the joys that they had bred.

NORAH S. ANDERSON.





THE SPINSTER



Athletic Association

OFFICERS

MARY GILES BELLAMY Chairman
 LUISE RATH Assistant Chairman
 ELIZABETH TERRILL Secretary and Treasurer

EXECUTIVE BOARD

MARY GILES BELLAMY
 LUISE RATH
 ELIZABETH TERRILL
 KATHARINE JUDKINS
 HELEN MCCOY
 EDITH WILSON
 ELLEN CHILES
 MILDRED HEARSEY



THE SPINSTER



MARY GILES BELLAMY



ETHEL GROSSCUP



LUISE RATH



ELIZABETH TERRILL

THE SPINSTER

The Recorded and Unrecorded Captains

1900-1916

	<i>Recorded</i>	<i>Unrecorded</i>
1900-1901	LENORA COCKE Yemassee	EDITH MALLORY Mohican
1901-1902	MARY MASTERS Mohican	FRANCES WAIT Yemassee
1902-1903	LUCILE CARTER Yemassee	SARAH GRIFFIN Mohican
1903-1904	MARY SHEPPARD Mohican	ELOISE CARPENTER Yemassee
1904-1905	EMILY WOODALL Mohican	ETHEL PILCHER Yemassee
1905-1906	KITTY TALBOTT Mohican	FLOSSIE DENMAN Yemassee
1906-1907	LAURA ARMITAGE Yemassee	BECKY PHILLIPS Mohican
1907-1908	BECKY PHILLIPS Mohican	CLARA ELLEN FCBES Yemassee
1908-1909	LOUISE CARPENTER Mohican	SARA WILHEIT Yemassee
1909-1910	FLORIE MALONE Yemassee	JEANIE COCKE Mohican
1910-1911	JEANIE COCKE Mohican	FLORIE MALONE Yemassee
1911-1912	WILLIE MUSE Mohican	GRACE MCCOY Yemassee
1912-1913	WILLIE MUSE Mohican	HETTY LAKE Yemassee
1913-1914	ESTELLE ANGIER Mohican	LUCY CARNEY Yemassee
1914-1915	No game	ELEANOR KENT Mohican
		KATHARINE JUDKINS, Yemassee
1915-1916	ANNA WHITNER Yemassee	MARGARET GRAVATT Mohican
1916-1917	KATHARINE JUDKINS Yemassee	MARY GILES BELLAMY Mohican

THE SPINSTER



MONROE, Red Cheer Leader



BUCKNER, Blue Cheer Leader

Basketball Record for 1916-1917

Oct. 27—Yemassee	35	Mohican	31
Oct. 31—Rain, no game			
Nov. 3—Yemassee	30	Mohican	29
Nov. 10—Yemassee	26	Mohican	21
Nov. 17—Mohican	35	Yemassee	28
Nov. 21—Mohican	19	Yemassee	18
Nov. 30—(Thanksgiving game) Yemassee	22	Mohican	14



THE SPINSTER



Yemassee Team

KATHARINE LEE JUDKINS *Captain*

<i>Forwards</i>	<i>Guards</i>	<i>Centers</i>
ESTHER ROUNTREE	ELSIE EVANS	ANN MONTAGUE
ETHEL RUSSELL	HELEN MCCOY	KATHARINE DAVIS
RACHEL MILLS	KATHARINE JUDKINS	MILDRED HEARSEY
ELIZABETH TURNBULL, Sub	LOIS HURT, Sub	JOSEPHINE HANCOX, Sub

YEMASSEE PLAYERS

MARY NOBLE SMITH	MIRIAM LECKIE	ROSAMOND BERRY
AILEEN SORRELS	MARY HOLLOWAY	LILLIAN DICKERSON
VIRGINIA RATH	MADGE ACKISS	JEMIMAH MCCALLA
EDITH WILSON	VIRGINIA SMITH	KATHERINE MATTHEWS
ELAINE SAUVAGE	RUTH HOLLAND	LUCILE CRIMM
LOUISE TAYLOR	ELIZABETH CONNABLE	DOROTHY WALKER
KATHERINE LEWIS		LILLIAN DAVIS



THE SPINSTER



YEMASSEE TEAM



Mohican Team

MARY GILES BELLAMY *Captain*

Forwards
 PHYLLIS CLARKSON
 LUISE RATH
 ELIZABETH BULL
 KATHARINE JOHNSON, Sub

Guards
 LOUISE HARWELL
 LOUISE WOOLFOLK
 MARY GILES BELLAMY
 DOROTHY SMITH, Sub

Centers
 RUBY RICHARDS
 VIVIAN MCCONIHAY
 GERTRUDE RATH
 LAURA BLANTON, Sub

MOHICAN PLAYERS

EMILY BATTLE
 RUTH BASTIAN
 BLANCHE BASSETT
 KATE BURDEN
 ELIZABETH BUNTON

STELLA CAMP
 SALLY CHERRY
 ELLEN CHILES
 CARILLA EBERHARDT
 EMMIE GIESECKE
 LYNETTE GRAHAM

HELEN HARDWICKE
 MARIAN LECKY
 SUNSHINE POPE
 FELICIA TAYLOR
 LOUISE WILLIS



MOHICAN TEAM



THE SPINSTER



THE SPINSTER





THE SPINSTER



Posted.



The Huggins' Baby



Vote for Hughes!



In Old Virginia



Laugh Yess



Les Totalsays



10:30



As seen on the Campus daily



Goodbye Gabe!



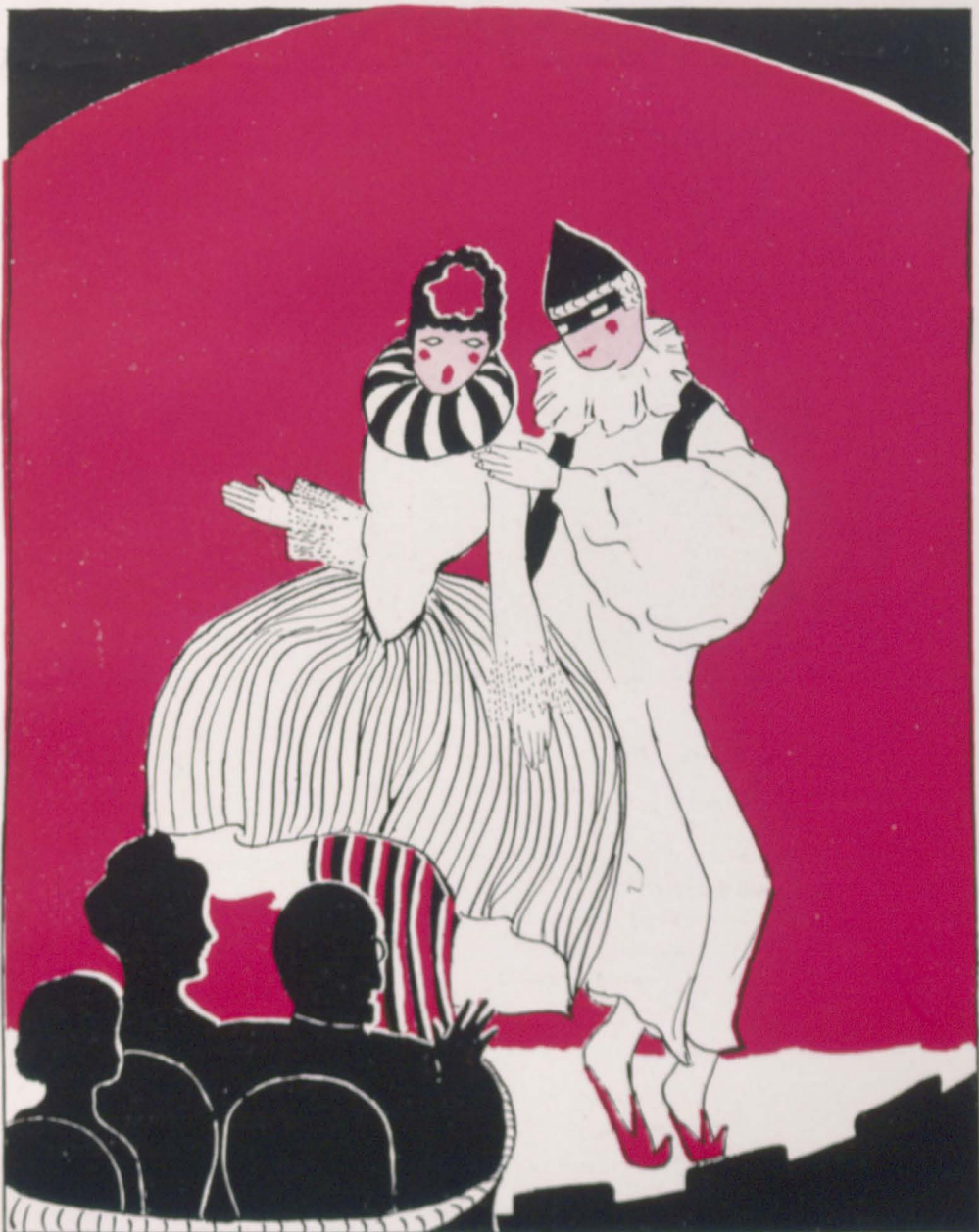
Monty



Lee Evening



Four of a kind and a pair



LA THEATRE.



THE SPINSTER



Dramatic Club

JENNIE SNEAD *President*

KATHERINE JUDKINS

MARTHA DIVEN

ELIZABETH PRUIT

RUTH MONROE

JENNIE SNEAD

LESLIE PATTERSON

LUISE RATH

SUE BUCKNER

CORDELIA BRODBENT

ELIZABETH TINSLEY

HONORARY MEMBERS

MISS PHILIP

MR. TURNER

MR. RATH



THE SPINSTER



A Dramatic Review for 1916-17

"What though we dream our dream?
What though we fight our fight?
What though we strive and scheme?
This world is but a stage.

And yet the spotlight lures,
And so we force a smile
And seek fame that endures
Only a little while."—Theatre.

"Bobby Shaftoe," an operetta in three acts, presented by Miss Campbell's vocal students, on Saturday evening, December 9, 1916, opened the season for Hollins theatregoers.

Bobby Shaftoe	LUISE RATH
The Earl of Mucklemuchin	MAE BUXTON
The Dowager, Countess of Mucklemuchin, his grandmother, aged 107	LETTIE WITHROW
Jeems, the ancestral valet	RUTH MONROE
Betty Lobsterpot, the belle of the village	NELLE HARTLY
Solomon J. Lobsterpot, her father, an old fisherman	E. PRUIT

Fisher Girls:

Allie	ELIZABETH GRAVES
Jane	NELLE HYDE
Maria	JENNIE CROWELL
Ann	LAURA WALLACE
Sally	KATHERINE WILHEIT
Edelgitha Aurora	GWENDOLIN MILLER

Fisher Boys:

Tommaso	MARY MARGARET SIMPSON
Themistocles	VIRGINIA OGDEN
Adelbert	HELEN HARDWICKE
Horace	BLANCHE BASSETT
Philostratus	LURLEINE WINDEL
Jim	MARY ALICE PARISH

Time: The Eighteenth Century

Place: A fishing village on coast of England

L. Rath, in the role of Bobby Shaftoe, only increased the number and praise of his admirers. Playing opposite L. Rath was Miss Nelle Hartly, whose delightful voice and charm show possibility of a new and promising figure in the stage world. Appearing in comical roles were R. Monroe and E. Pruit, our favorite comedians. Monroe's "Yes, yes, yes, yes, yes, me lord; no, no, no, no, no, me lady," and Pruit's bombastic speech received shouts of applause and peals of laughter from the audience. In fact, we pronounce it an all-star cast, and the air, "Bobby Shaftoe's gone to sea—but he will come back to me," continues to ring through our heads.



THE SPINSTER



"Contrary Mary"

John Erwin, a successful business man, age 30	K. L. JUDKINS
Frank Warner, his friend, a lawyer, age 27	M. DIVEN
Mr. Trowbridge, Mary's father	F. MCINTOSH
Mr. Fairfield-Fairfield Stephens, a Fifth Ave. beau	J. SNEAD
First Drayman	E. WOOL
Second Drayman	M. N. SMITH
Delivery Boy	M. GRESHAM
Mary Erwin, nee Trowbridge, age 25	NORAH ANDERSON
Barbara Drew, Mary's friend, age 23	ELIZABETH TINSLEY
Teresa Murphy, a privileged cook	RUTH MONROE
Juno Jergerson, a Swedish janitress	ELIZABETH TURNBULL
Miss Jones, a dressmaker	ELLEN CHILES

Time: The present

Scene:

ACT I.—Morning room in John Erwin's suburban home on the Hudson.

ACT II.—Late afternoon of the same day. A vacant studio room.

ACT III.—Two weeks later. Mary's studio.

On Saturday evening, December 16, 1916, the Spinster Stock Company, featuring Miss Norah Anderson, supported by her able cast, presented "Contrary Mary." Once more we were permitted a good laugh at our Hollins Falstaff, when R. Monroe scored the biggest hit of the season as the excruciatingly funny and yet indispensable Teresa Murphy. With few exceptions, the entire cast was a familiar one on the Hollins stage, and they presented this charming little farce comedy with their usual skill and charm.



THE SPINSTER



"The Sky Riders"

Saturday, February 17, 1917, the Euzelian Stock Company presented "The Sky Riders" at the Hollins Theatre, with the following cast:

Algernon Gordon Brown, an aviator by necessity	S. BUCKNER
Horace Saunders, a birdman of the same feather	E. WOOL
Teddy Nixon, a wireless operator	L. RATH
Koma, a Jap servant	E. JOHNSON
Mrs. Algernon Brown, a sentimental wife	LESLIE PATTERSON
Helen Brown, her daughter	MARY GILES BELLAMY
Juliana Brown, her daughter	CORDELIA BRODBENT

Algernon Gordon Brown has come to California, with his daughter, Juliana, to find a residence for Mrs. Brown. An aviator of precisely the same name is startling California with his dare-devil feats. Mrs. Brown thinks the aviator is her husband, and, with a second daughter, Helen, rushes west to join him. She arrives just when the real aviator is to make a flight to Honolulu, and she has boasted so of her husband's supposed success that he cannot bear to disillusion her. Juliana keeps it up as a huge joke on her mother and sister. A young newspaper man, Saunders, and Teddy Nixon, a wireless operator, in love with the two sisters, are also in the plot. A Japanese servant, Koma, discovers the truth, but is silenced. The real aviator begins his trip, Brown says good-bye to his wife and is supposed to be off for Honolulu, accompanied by Saunders, although they are really in hiding nearby. Brown is nearly caught several times. When news comes of a disaster in mid-ocean, Mrs. Brown is prostrated. Helen sees her father and thinks he's a ghost. Ted, the wireless operator, gets timely news of a rescue. Brown and Saunders return triumphant. Mrs. Brown, proud and happy, promises never to mention aviation again, and the two love stories end happily.

Laughter, tears, romance and thrills alternate in ingenious succession. It was a splendid cast. S. Buckner, who never fails to score a hit, played the lead in the person of Mr. Brown. Leslie Patterson was well suited to the role of his sentimental wife. She acts admirably. Cordelia Brodbent, appearing on our stage for the first time, ably supported the star. Mary Giles Bellamy, in the role of Helen, added charm and enthusiasm to the scene. In the many amusing situations that arise, L. Rath and E. Wool act with remarkable cleverness, and their jolly versatility often saves the day. In adding the charm of oriental atmosphere, E. Johnson as Koma was the final wind-up to the generally accepted success of "The Sky Riders."



THE SPINSTER



"The Importance of Being Earnest"

John Worthing, or Jack Ernest	S. HADAWAY
Algernon Moncrieff	M. WHITE
Cecily Cardew, ward of John Worthing	ANNE WILLINGHAM
Lady Brachnell	LESLIE PATTERSON
Gwendolen Fairfax, her daughter	EDNA HURM
Miss Prism	ELSIE EVANS
Lane	D. HUFF
Dr. Canon Chasubel	S. CHERRY
Merriman	M. WILKIN

John Worthing, having invented an imaginary brother of the name of Ernest, became known as Ernest to Gwendolen Fairfax, with whom he fell in love. Algernon Moncrieff determines to impersonate his fictitious brother in order to introduce himself to John's ward, Cecily Cardew. The critical problem that forthwith arises is which young lady is engaged to Ernest.

In "The Importance of Being Earnest," the Magazine Staff introduced a new cast to us, but one which was entirely approved and universally favored. S. Hadaway, our new hero, is destined to become a well-known and popular actor in our stage world. Never before has Miss Hurm appeared so charming as in the role of Gwendolen Fairfax, which she portrayed with unusual ability. Also, we were more than pleased with Elsie Evans' interpretation of Miss Prism. It was an actor's play—however, the entire cast had opportunities—and their acting made the play most enjoyable.



THE SPINSTER



"The New Lady Bantock"

On Saturday evening, March 10, 1917, the theatre fans were thrilled beyond words by the unexpected appearance of Joe Turner, the famous green room idol, supported by an all-star cast. That the Senior Stock Company was able to secure his services, as well as those of Eric Rath, Henry Fuchs and Estes Cocke, all of footlight fame, is the unexplainable marvel of the year, and it is the ardent desire of every play-goer to see them often during the 1917-18 season.

The play presented was "The New Lady Bantock," and the marvelous cast ran as follows:

Fanny, the New Lady Bantock	MISS KATHARINE JUDKINS
Vernon Wetherell, Lord Bantock, her husband	MR. ERIC RATH
Martin Bennet, her butler	MR. JOE TURNER
Susannah Bennet, her housekeeper	MISS ALICE FECHLIG
Jane Bennet, her maid	MISS BIRDIE JACKSON
Honorina Bennet, her parlor maid	MISS HELEN MCCOY
Ernest Bennet, her second footman	J. GOODWIN SNEAD
Dr. Freemanth, her medical man	MR. ESTES COCKE
George P. Newte, her former business manager	MR. HENRY FUCHS
Her one-time companions, chorus girls from Our Empire:	
England	MISS EDNA HURM
Scotland	MISS BEULAH BENNET
Ireland	MISS RUTH MONROE
Wales	MISS ESTELLE DUFFY
Canada	MISS ELIZABETH TERRILL
Miss Wetherell	MISS MARGARET WHITE
Miss Wetherell	MISS SARAH KATHERINE HULTON

The scene is laid at Bantock's Hall, Rutlandshire, England. The play itself was a good one and was made the most of by this unsurpassed cast.

* * *

And now, as something to look forward to, we announce that the Eupreian Stock Company will play at the Hollins Theatre in "Mr. Bob."

Don't fail to see it! E. Pruitt can always be counted on to say something worth while! Let the company's previous appearances serve as stepping stones to this final success.

Then, the Dramatic Club expects to bring the 1916-17 theatre season to a fitting climax by its appearance in ensemble, some time during Commencement week, since it is the wish of its members to make that organization more significant in the Hollins world.

M. DIVEN, Dramatic Reporter.



THE SPINSTER



1916-1917 BILLBOARD

Hollins College

VIRGINIA



Nineteen Hundred Sixteen
and Seventeen

Historical Sketch of Hollins

To the average Hollins girl Hollins really begins the day she arrives. It is founded, builded, peopled, servanted, and catalogued for her especial benefit, and on the day of her registration officially opened and set to running.

So, for the enlightenment of those so unfavored individuals and future prospective patrons, we think an historical sketch of this college a most happy intervention at this point, as well as suitable material for a catalogue.

People are born, houses built, churches erected, rivers originated, reputations made, seeds disseminated, but only colleges are founded. And Hollins, not departing from the time honored custom, was founded in 1842.

Although some landmarks yet remain, sulphur spring, trees, darlings, and the eager pursuit of knowledge, yet since that date there have been many changes which we believe could be most strikingly appreciated by a graduate of 1846 if he or she should come back and compare the facts of then and now. Let us list for careful study some of these improvements:

Dress.—For some unaccountable reason in the early years of Hollins no regulations or rules were made for dress. Whether it was because of more favorable climatic conditions or that the students were more sensible, the records do not tell, but it is surely a decided mark of improvement to note the standardization of dress in some ways.

I. High shoes, or slippers and spats (two competing concerns call for all garments four times each week) must be worn.

II. Only crepe de chine, georgette, or silk waists or dresses, are allowed. No heavy linens or wash material.

III. Hoffin suits are becoming the unwritten uniforms, and are really quite becoming to all sizes—pupils or teachers.

Amusements.—I. In 1910 a Victrola was presented to the school, and from the gentle suggestion, many have become owners of this popular musical instrument.

II. Due to the departure of the masculine element from Hollins, no longer do the men grace our social functions, but the girls not to be downed by this calamity still pursue their dancing for fifteen minutes each night.

a lady's gown than was the humming bird to trim a fall hat. Two hours a week are spent in drawing dear little leaves which are gathered every afternoon by the instructor. Though Physiology may be substituted for Botany, it is never advised, as no one's education is complete without a knowledge of plant life.

"To him who in the love of nature holds
Communion with her visible forms; she speaks
A various language."

Astronomy PROFESSOR COCKE

This course aims to give the student a sufficient knowledge of the celestial sphere to enable her to "talk about the stars" on fair summer nights. The class meets three times a week on the roof of the Science Hall, irrespective of thermometer or barometer. Some of the students become so familiar with the constellations as to be able to distinguish the gold wash on Orion's belt from the marcel wave in her hair.

History and Political Science

PROFESSOR TERRELL

MISS SCOTT

History is taught from the standpoint of the development of infinite knowledge, to see how the "leak" in Wilson's peace note grew out of the killing of Abel by Cain, and to establish the French Revolution as a basis of all forms of research rather than to give the student any chance to think otherwise. Emphasis is laid upon the famous men born in Virginia, the wealth of Pittsburg, the ancestry of Emperor Charles V, the wives of Henry VIII, and the fashionable society of Newport.

Domestic Science and Physical Training

PROFESSOR ADAMS

PROFESSOR GROSSCUP

Formerly the above were separate departments, but because of their congeniality, only discovered during the session of 1916-17, it was decided to combine them into one course of study. Miss Grosscup not only is most proficient on gymnasium apparatus, but she uses her muscle most advantageously in beating Miss Adams' "Divinity."

Lectures, 1916-17

"The Puzzle of the Medical Profession"—Dr. Allen J. Black.

"Fake Ideas of How to Be Popular"—Hurm and Wilkin.

"The Value of a Good Figure"—Miss Agnes Terrell.

"The Most Economical Way That Four Girls May Peruse One Book"—
Miss Merian Bayne.

"Democracy and Its Failure"—Anne Montague.

"Parlor Tricks"—Mrs. Lucian Cocke.

"How to Be Tactful"—Miss Parkinson.

"Why Black Balls Are Better Than White"—Helen McCoy.

Special Attractions Seen at the Hollins Theatre

September 17—Lecky, Sterling and Davis, in "Nobody Home."

September 20—Miss Mabel Wilkin, in "Grumpy."

October 1—Flossie Edrington and Aileen Sorrels, in "The Climbers."

October 28—Miss Agnes Terrell, in "Her Own Way."

November 10—Kitty Lawson, in "The Naked Truth."

December 1—Allie Fechtig, in "The Law of the Land."

January 17—Helen McCoy, in "Cupid's Trick."

March 13—Hadaway, McIntosh and Patterson, in "Three Blind Mice."

April 20—Mrs. Boozer, in "Bunker Bean."

General Information

What Comes Out In The Wash

I.

When first we come to Hollins,
We're spick and span and clean;
We each are individual,
And equally as green.

II.

But as the days and weeks go by,
Our colors begin to fade;
And soon we find that most of us
Into other things are made.

III.

But then there comes a reckoning day;
We all are sent to wash;
And in the great entanglement
Against each other josh.

IV.

And there we find, by some strange fate,
We cannot choose our pile;
But we are sorted, each of us,
According to our style.

V.

The great wheels turn, the wash is done;
Oh, girls, let's look and see
What's happened to this club or that,
And your fraternity.

VI.

What heterogeneous thing is this?
And why so helter skelter?
There seems to be no unity!
Oh, say! Why, that's Tri Delta!

VII.

And look at this—who can it be?
With Esther, Kass, or Anne?
Don't get alarmed; it's Grosscup, dear,
And not a sure 'nough man.

VIII.

Oh, ribbon faded, short and long;
Thirteen upside and down.
Go wash again—use lye and soap;
You'll lose those girls, look 'round!

IX.

Oh, woe to us! What can this be?
It looked as if it tried.
What should we do with this that's left?
We'll have poor Dragon dyed.

X.

Oh, dear! Oh, dear! There's something
wrong.
This really looks brand new.
How can the Hollins people know
'Twas meant to be Phi Mu?

Grins and Groans

Mrs. Behan (in Composition II): Miss Anderson, what are the "Greek Unities"?

Norah: A collection of short stories by Homer.

* * *

Beetz says: Life is just one exam after another!

* * *

Roundtree: I don't know anything about Venus and Psyche; I believe I'll take Physiology.

* * *

Tinsley: Are you tired?

Kass: Yes, but not with standing.

* * *

First Girl: When does Darwin's theory of the "Survival of the Fittest" apply at Hollins?

Second Girl: After the first quarter marks are read.

* * *

I.

'Twas one cold night at Hollins;
I was sleeping in my bed,
When I heard a dreadful ringing
That seemed to pierce my head.

II.

Half dazed, I awoke from slumber,
But recognized the call;
It was that dreaded fire alarm
That on my ears did fall.

III.

I sprang up quickly from my bed,
And slammed the windows tight;
Grabbed a coat, some shoes and towel,
And hurried out of sight.

* * *

Have you read "The Romance of Billie (goat) Hill(s)," by Herself?

* * *

Mrs. Turner: Wade, have the bell rung."

Wade: No, ma'm.

Who's Who at Hollins

I.

There was a young lady named Nell,
And deeply in love she fell;
Soon, in a state of confusion,
She found she'd been disa (Luciened),
And as to her heart—oh, well!

II.

You have surely heard of Sue C.;
Her "pep" runs wild and free.
'Tis hard to relate
What would be our fate
If we would be "sans Sue C."

III.

You have heard of the frat, Phi Mu;
Now, some may think 'tis brand new,
But the truth is, indeed,
They have now run to seed,
And can only boast of a few.

IV.

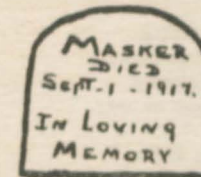
"Have unity, coherence and emphasis,"
Miss Boyd has often said;
But out of Gamma Phi Beta
These elements surely have fled.

V.

Don't be alarmed and afraid;
It's not a fire drill on parade—
It's only our friends, B Σ O,
You can tell them, wherever they go.

VI.

Oh, where, oh, where have our little clubs
gone?
Oh, where, oh, where can they be?
Joker and Masker, they stayed with us
long;
Now only their memory we see.



Ask Margaret White about the dark horse that turned out to be a mule!

* * *

After announcement of lecture on "Single Tax":
One Prep to another: Wonder why we have to go to a lecture on
taxing old maids.

I Wonder Why

I.

In the fall at Hollins, they say,
The life was giddy and gay;
Many a maid did trip away
To W. & L. and U. Va.
I wonder why! I wonder why!

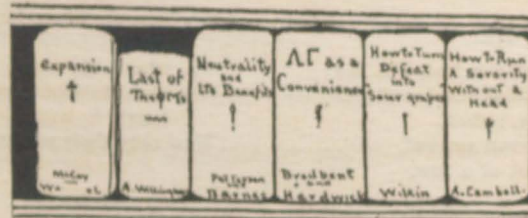
II.

But soon, Miss Mattie did say,
For all who dance and play
Two points are deducted away
From your average every day.
I wonder why! I wonder why!

III.

Alas! for the "gay white way,"
For, because of the price we pay,
Nary a maid does trip away
To W. & L. and U. Va.
I wonder why! I wonder why!

Books Every Hollins Girl Should Know



There is a local exclusive in school
That prides itself on keeping the rule;
So eager are they to hold full sway
They have no scruples in means or way.

It's quite the custom in Kappa Delta
To lend their clothes, their food and their
shelter.
They took their rushees to Randolph-
Macon;
Now, the question is—"Why didn't they
take 'em?"

* * *

A Daily Occurrence

The first triangle's ringir'.
But you don't hear it—no.
You just keep on a-sleeping
For fifteen minutes or so.

Water in the pitcher's frozen,
But that is nothing new;
It's been that way before,
So you know just what to do.

'Bout twenty-five after seven
You realize your sad plight;
You'd pay someone a quarter
To put down the window tight.

The last triangle's ringin';
"Where's my other shoe?"
Well, here's a boudoir slipper;
Guess it'll have to do!

You rush downstairs like lightnin',
Finish dressing on the way;
But Miss Mattie's said the blessin',
And you're late again today!

K. L.

I Wonder Why?

Now, once there were three little "preps,"
Just crazy as can be.
They all got a darling on one maid,
And why—I cannot see.
I wonder why!
I wonder why!

And so the sweet young lady
To each one she did go,
And said: "My dearest girlies,
You know I love you so."
I wonder why!
I wonder why!

They sent her flowers and tokens,
And all fell at her feet—
One stopped a-sleepin'
And forgot how to eat.
I wonder why!
I wonder why!

A gentle scolding she gave us;
We didn't care at all—
But only smiled and whispered:
"You are my all in all."
I wonder why!
I wonder why!

And now this tale is finished,
But this I have to say—
The "preps" are a little wiser,
And grow more so each day.
I wonder why!
I wonder why! M. M. C.

* * *

First Girl: What would you think if you wrote home for money and didn't get it?

Second Girl: I'd think it a case of unremitting kindness.

* * *

Notice: The Mummy Club will be delighted to lend its constitution to the Sphinx Club in order that they may imitate them to the minutest detail.

* * *

Little Joe (to his father): Daddy, how do you spell saf?
Mr. Turner: Saf—why, how are you going to use it, son?
Little Joe: Why, in this *safternoon*, of course.

What's In a Name?

She, a girl with beautiful *Hazel* eyes, *Brown* hair, and with *Sunshine* in her smile, was spending the summer at *Camp*. The man was there for the week-end. He had seen this girl before—once with a *Miller*—and then he remembered she was in his *Parrish*, and that she sat in his *Pugh* one Sunday. He noticed she was rather *Flossie* looking, but had a *Noble* brow, and that her *Taylor* must have been a *Farmer*; but still she *Hadaway* with her that attracted him.

He had met her the night before *Bolling*. So now he thought he'd *Walker*, or else ride in his *Ford*.

"Good evening," he said. "May I have the pleasure?"

"Certainly," she replied. Isn't it a lovely night? Shall we go down the *White* way or go *West* through the *Wood* and listen to the *Birdsong* by the *Rountree*?

"How do you like this place?" the man asked her.

"Very much but for some things. Once in a while the *Masters* get in a *Huff*, and they are real *Savage*. They haven't any *Hart*. Then, besides, the meals are so awful. We never get anything but *Herring* for breakfast."

"The people are nice, though," she went on. "There's the funniest old lady *Anderson* here, and everything he does, she says: '*Lawson*, you're a *Simpson*. Now, I'll do this, and *Wilson* do that?' She's always so *Cherry*."

Then he and she discussed various things—the character of the village *Smith*, the new *Barnes* being built. Then suddenly she spied a *Hunter* in the *Woods*, and exclaimed:

"Oh, let us *Hyde*! We might get *Shott*. Oh, it's *Jackson*, who's been in a *Battle*."

When they passed the *Mills* and reached the *Abbe* they sat by the brook and watched a boy *Wade*. Then they returned home through a *Mansfield* and heard a snake *Russell* in a *Cuddy* hole of the fence. She was frightened, and the boy yelled: "*Patterson*."

The man told jokes on the way home and was such a good *Jester*. When they reached the *Camp* he *Kisster* and asked to come a *Ginn*, and then he rode in the *Ford* over the *Hills*.

M. M. C.

Campus Favorites

"A Gem From the Beauty Shop"	LOUISE TAYLOR
(Beauty)	
"Military Hero"	ESTHER ROUNTREE
(Athletics)	
"Believe Me, If All Those Endearing Young Charms"	LAURA BLANTON
(Attractive)	
"That's a Real Moving Picture From Life"	KATHARINE JUDKINS
(Handsome)	
"He May Be Old, But He's Got Ideas"	KITTY LAWSON
(Most Original)	
"A Gem From Monkey Land"	VIRGINIA SMITH
(Cutest)	
"Dream Pictures"	ELLEN CHILES
(Artist)	
"Humoresque"	KITTY LAWSON
(Wittiest)	
"She's the Sunshine of Virginia"	VIRGINIA SMITH
(Happiest)	
"Too Much Mustard"	SUE BUCKNER
(Most Enthusiastic)	
"Favorita"	ALLIE FECHTIG
(Most Popular)	
"Waltz Me Around Again, Willie"	LAURA BLANTON
(Best Dancer)	
"You Have to Have a Part to Make a Hit"	RUTH MONROE
(Best Actress)	
"In the Garden of the Gods"	ELIZABETH BULL
(Most Talented)	
"Paddle Your Own Canoe"	ALLIE FECHTIG
(Most Capable)	
"Mr. Love Will Get You Yet"	HELEN MCCOY
(Most Dignified)	
"Voice of the Nightingale"	ELIZABETH FRUIT
(Best Voice)	
"Tickle the Ivories"	EDNA HURM
(Best Musician)	
"Mlle. Modiste," "All Dressed Up and No Place to Go"	KATHARINE JUDKINS
(Most Stylish)	

"Meditation"	ALLIE FECHTIG
	(Most Intellectual)
"He's Me Pal"	ALLIE FECHTIG
	(Most Democratic)
Medley, "A Little Bit of Everything"	ELIZABETH BULL
	(Best All-Around)
"You Are the Queen of My Heart"	KATHARINE JUDKINS
	(Queen of Hearts)
"Life Is a Game of Bluff"	NORAH ANDERSON
	(Biggest Bluffer)
"Buzz in the Bee"	MINNIE BREWER
	(Biggest Gossiper)
"Have a Heart"	KATHARINE JUDKINS
	(Biggest Stringer)
"A Little Love, a Little Kiss"	EDITH BARNES
	(Most Sentimental)
"Teach Me to Smile"	EDNA HURM
	(Most Blase)
"What's the Use?"	JEMIMA MCCALLA
	(Laziest)
"I Want What I Want"	FLOSSIE EDRINGTON
	(Most Spoiled)
"Open Up Your Heart"	KATHARINE JUDKINS
	(Most Exclusive)

* * *

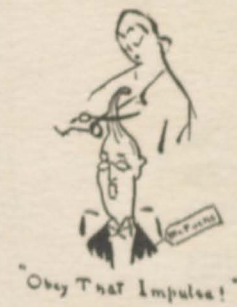
Summer School Sobs

When you're sittin' with your sweetheart, close together in the night,
 And the lightnin' bugs a-glimmer flashin' in the soft moonlight;
 When the slow, cool wind of summer gently fans the heat away,
 And the darkness, fallin' round you, hides the scars and cares of day;
 When you're sittin' there together and your arm around her steals;
 When your heart a-bumping, pumping, and your brain just kind of reels;
 When you draw her to you closer and you kiss her once or twice,
 Then you think that you're in heaven and that heaven's awful nice.
 When you tell her that you love her and she blushes red as rose;
 Kind o' draws away right slowly, just to fool you—just a pose;
 She'll come back to nestle closer in that tender curvin' arm—
 Oh, the gladness of that madness, Summer madness; What's the harm?

J. G. S.

(EDITOR'S NOTE—No wonder she didn't get off more work in Summer School.)

HOLLINS ADS.



BEAUTY PARLOR



Curly! Cute! Coy! Cow-Licked! Bangs!
Be in Style! Take Your Choice!

Painless Eyebrow
Remover

Guaranteed to Give the
Artful Arch!



MESSY METHODS FOR
MANGLING MESSAGES
FOR MINIMUM MONEY
APPLY TO MINNIE!

MOSBY

JEFFRIES

First Aid To
Frantic Fraternities

WE WILL
TEACH

YOU

HOW TO
RUSH

Private Consultations

Have You Seen My Supply?
Don't Let This Golden
Opportunity Go By

Pennants!

Pictures!

Frames!

No Other Silver Like It
Guaranteed to Tarnish!

Let Me Do You Out of
Your Money

DOT SMITH (Inc.)

Lessons in Stringing!

How to Obtain the Best
Results from a Darling Case!

COME EARLY AND
AVOID THE RUSH

GROSSCUP & JUDKINS

Stop and Think!

Are Your Clothes
Properly Pressed?

As An Irresponsible and
Longsuffering Concern
You Are Guaranteed
Service and Satisfaction

\$1.00 — A LOOK — \$1.00

No Spot Removed
Each Crease Retained

LEWIS HUNT

SPECIALLY CONDUCTED TOURS

See Hollins with a Competent Guide
I Am Always Ready

Gentlemen Preferred

E. PRUIT

Let ME Do It
For You



Why Have More Than
One Proctor?

I Realize My Importance and
Can Be in All Buildings
At One Time!



A. CAMPBELL

HOW TO MANAGE
FIVE DARLINGS

AT ONE TIME!

No Hard Feelings and Guaranteed to
Get Away With It!



E. ROUNTREE

Why Go to the Movies?

See Mary Pickford-Marguerite Clark in One

I DO MY OWN ADVERTISING

See My Studio, and Don't Fail to Get One of My Souvenir Pictures

OUIDA RISNER!!!



THE SPINSTER



AFTERWORD

AFTER THE "SPINSTER" IS FINISHED, WE OF THE STAFF DRAW A RELIEVED BREATH, BUT AWAY DOWN DEEP IN OUR HEARTS WE ARE AFRAID—WE HOPE THE HOLLINS GIRLS WILL LIKE THIS YEAR-BOOK FOR NINETEEN SEVENTEEN

WE WISH TO THANK MARY MASTERS TURNER, PHOEBE HUNTER GILKYSON, AND EUGENIA BARRINGER, ALL OF WHOM WERE EDITORS-IN-CHIEF OF OTHER YEARS; MISS ALICE RUMPH AND MISS LULIE M. SNEAD OF THE FACULTY; ELSIE EVANS, VIRGINIA RATH, KATHLEEN COLLIER, AND MARGARET CUDDY OF THIS YEAR; MISS MARY MCCLINTOCK OF THE STONE PRINTING COMPANY, THE BENSON PRINTING COMPANY, AND MR. W. O. COLE, PHOTOGRAPHER, FOR THEIR APPRECIATED CONTRIBUTIONS AND MOST KIND HELP. MOST ESPECIALLY DO WE WISH TO THANK THOSE GIRLS WHO LET US APPROPRIATE SO UNCEREMONIOUSLY THEIR KODAK PICTURES.

PLEASE, YOU WHO READ, LIKE THIS BOOK WE AND THESE, OUR FRIENDS, HAVE WORKED SO HARD TO GIVE YOU. IT IS WITH THIS ONE AND ONLY PLEA THAT WE CLOSE THE SPINSTER OF NINETEEN SEVENTEEN.

THE EDITORS.



THE SPINSTER



Spinster Staffs

FROM 1898, THE DATE OF PUBLICATION OF THE FIRST SPINSTER, TO 1916

1898	ANNA COWAN GALES	Editor-in-Chief
	ROSE PLEASANTS COCKE	Associate Editor
	GERTRUDE WHITING	Art Editor
	BESSIE KENDRICK PEYTON	Business Manager
	MARY ANTOINETTE JOHNS	Assistant Business Manager
1899	LOUISE WARD	Editor-in-Chief
	M. FREEMAN, E. WILLS, F. WEBSTER, E. FURMAN, J. BABB, A. STABLER, E. DINWIDDIE	Associate Editors
1900	MINNIE T. FREEMAN	Editor-in-Chief
	MARY C. KUSIAN, ETHEL WITHERSPOON	Art Editors
	CARRIE J. FULLER, KATHERINE B. TUPPER, FLORENCE BOOTH	Associate Editors
1901	MARTHA WILLIAMSON	Editor-in-Chief
	ALLENE TUPPER	Art Editor
	SUSIE POLLARD, ETTA BLANCHARD, FRANCES WOOTERS	Associate Editors
	KATHERINE TUPPER	Business Manager
1902	AIMIE REED	Editor-in-Chief
	MARJORIE BOOTH	Art Editor
	HENRIETTA BLANCHARD, FRANCES WAIT, MARY V. MASTERS	Associate Editors
1903	MARY V. MASTERS	Editor-in-Chief
	MARJORIE BOOTH	Art Editor
	FRANCES WAIT, LUCILE M. CARTER, SARAH GRIFFIN	Associate Editors
	FRANCES WARREN	Business Manager
	MARGARET MCCALLA	Assistant Business Manager
1904	LEONORA COCKE	Editor-in-Chief
	MARJORIE BOOTH	Art Editor
	MARY SHEPPARD, ETTA REAVES, OLIVE SKEGGS	Associate Editors
	ANNIE CLARKSON	Business Manager
	MARGARET MCCALLA	Assistant Business Manager
1905	MARY J. CHANDLER	Editor-in-Chief
	M. COCKE, R. SATTERFIELD, C. L. GEDGE, R. THOMPSON	Associate Editors
	LOLA SMITH	Business Manager
	LALLIE LEE CARPENTER	Assistant Business Manager
1906	FRANCES KINGSLEY LIGON	Editor-in-Chief
	ROSE SATTERFIELD, FLOSSIE DENMAN, ELSIE MILES, BESS PORTER	Associate Editors
	LALLIE LEE CARPENTER	Business Manager
	VIRGINIA WILLINGHAM	Assistant Business Manager
1907	MARGARET LOUISE HALL	Editor-in-Chief
	L. MURPHY, A. DARLINGTON, H. BARKSDALE, E. WITT	Associate Editors
	LULU STEDMAN VIRDEN	Business Manager
	CLAUDIA WOOD	Assistant Business Manager



THE SPINSTER



1908	LOUISE BOYCE MURPHY	Editor-in-Chief
	S. TILLMAN, P. HUNTER, C. BRYAN, G. JOHNSTONE	Associate Editors
	MARY MILES	Business Manager
	LOUISE CARPENTER	Assistant Business Manager
1909	PHOEBE UNDERWOOD HUNTER	Editor-in-Chief
	S. TILLMAN, M. WILKINSON, F. LONGAN, H. STEINER	Associate Editors
	DORA LOUISE CARPENTER	Business Manager
	VIRGINIA C. CORKE	Assistant Business Manager
1910	MAYSIE SLOAN LYLES	Editor-in-Chief
	J. COCKE, D. HILL, N. HOLMAN, H. TAYLOR	Associate Editors
	VIRGINIA CHEVALIER CORKE	Business Manager
	FLORRIE MALONE	Assistant Business Manager
1911	DOUGLAS HILL	Editor-in-Chief
	J. COCKE, R. RIDDICK, B. WILLIAMS, K. BRISIUS	Associate Editors
	FLORRIE MALONE	Business Manager
	ANNIE COOLEY	Assistant Business Manager
1912	ROSE ERSKINE HEILMAN	Editor-in-Chief
	L. COONEY, A. MUCKLEROY, E. ANGIER, H. CORKE, R. CRUPPER	Associate Editors
	ANNIE COOLEY	Business Manager
	KATE WATTS	Assistant Business Manager
1913	KATHERINE WATTS	Editor-in-Chief
	E. ANGIER, E. CAMP, H. DUNTZE, A. MUCKLEROY, M. BOSWELL	Associate Editors
	MARTHA WATSON	Business Manager
	BESSIE MARTIN	Assistant Business Manager
1914	ANNA MUCKLEROY	Editor-in-Chief
	B. R. BOSLEY, W. H. MUSE, D. C. MAYO, E. BARRINGER, M. E. ANGIER	Associate Editors
	BESSIE T. MARTIN	Business Manager
	GLADYS E. SCALING	Assistant Business Manager
1915	EUGENIA BARRINGER	Editor-in-Chief
	B. MONROE, C. PHILSON, M. SAWYER, E. KENT, E. MOORE	Associate Editors
	BERENICE FORD	Business Manager
	VIRGINIA MILTON	Assistant Business Manager
1916	ALMA NIX	Editor-in-Chief
	C. PHILSON	Art Editor
	B. MONROE, N. CHOATE, G. BLOODWORTH, J. SNEAD	Associate Editors
	VIRGINIA MILTON	Business Manager
	ALLIE FECHTIG	Assistant Business Manager
1917	JENNIE SNEAD	Editor-in-Chief
	ELLEN CHILES	Art Editor
	NORAH ANDERSON, ELIZABETH TINSLEY, KATHARINE JUDKINS, MARTHA DIVEN, BETTY TURNBULL	Associate Editors
	RUTH MONROE	Business Manager
	FRANCES MCINTOSH	Assistant Business Manager



BENSON PRINTING CO.

COLLEGE ANNUAL EXPERTS

136 FOURTH AVENUE, NORTH
NASHVILLE, TENN.

*This Season We Are Printing 30 College Annuals
for Schools and Universities in 15 States*

¶ The Benson Printing Co. is a printing plant specially equipped for every kind of school and college work. It is a complete organization with artists and designers and workmen whose thought and inspiration is concentrated in the production of College Annuals and School Literature.

¶ Each year annuals are printed for such institutions as Vanderbilt, Tulane, Alabama, Sewanee, Cumberland, Trinity College, Mississippi A. & M., Louisiana State University, Kentucky State, Transylvania, Marietta College, Louisiana State Normal, Hanover College, Roanoke College, Tusculum College, Richmond College, Southern College, Hollins College, Hendrix College, Austin College, Meridian College, Tennessee College, Martin College, Centre College, Ouachita College, Asbury College, Millsaps College, Belhaven College, Maryville College, Kentucky College for Women, Mississippi College, and Logan College.

*Samples and Prices Cheerfully Furnished Any
College or University Upon Request*

THIS BOOK IS A SAMPLE OF OUR WORK



BIRD'S-EYE VIEW

HOLLINS COLLEGE

FOUNDED 1842



LOCATION

Mountains of Virginia, seven miles north of Roanoke.

BUILDINGS

Nine large brick buildings, equipped for forty officers and teachers, and two hundred and fifty students.

COURSES OF STUDY

- I. College Course—Four years, with fourteen units entrance requirements.
- II. College Preparatory—Two years.
- III. School of Music—Piano, Voice, Violin, Organ, Theory, Harmony, etc. The Music faculty consists of a Director, and six teachers associated with him.
- IV. Art, Expression, Domestic Science, Physical Culture.



THOSE INTERESTED ARE INVITED TO APPLY FOR
CATALOG AND OTHER PUBLICATIONS
WHICH GIVE FULL INFORMATION

YOUR PRINTED MATTER REACHES TEN CUSTOMERS WHERE YOUR SALESMAN REACHES ONLY ONE

They judge the character of your product by the appearance of your booklet, catalog, or stationery. Don't slight your printing. Use printed matter that is so good it will do the highest service for your business. There's usually only a slight difference in price, if any, between GOOD printing and POOR printing; and the better grade is worth much more than this difference—to you.



UNIFORMLY GOOD PRINTING

IS CHARACTERISTIC OF THE
PRODUCT OF THE

OBSERVER PRINTING HOUSE

(Incorporated)

B. R. CATES, MANAGER

CHARLOTTE, N. C.

THE NEWEST CONCEIT OF FASHION

IS ALWAYS HERE FOR THE

COLLEGE GIRL

For Athletics and the "Gym," for Sports and Out-of-Doors, for Dress Occasions and Evening Wear. Including the much-wanted "Mat-Hop" Blouses, and Suits for every-day utility.



S. H. HEIRONIMUS COMPANY

JEFFERSON STREET

ROANOKE, VA.

CHURCH AVENUE

GEORGE MAC BAIN CO., Inc.
"The Shopping Center"

ROANOKE, VA.

MILLINERY
OF EXCLUSIVE STYLE AND
READY-FOR-WEAR SHOES

THE STORE FOR WOMEN

K. W. GREEN

MANUFACTURING JEWELER AND
EXPERT REPAIRING

10 CAMPBELL AVENUE, WEST

ROANOKE, VIRGINIA



Worn Here, There and Everywhere

WALK-OVER
BOOT SHOP

12 Canal Avenue, West

Roanoke, Virginia

TO SEE THAT WE LEAD ALL OTHERS
IS AS EASY AS "2 AND 2 MAKE 4"

Take a trip to New York, Philadelphia or Boston, and see if we are not giving you a book and stationery store that will compare favorably with any in these cities.

Out of close study, hard work, and greenbacks, we have established a *real* book and stationery store. In each department of this store we have one who knows the fine points of the game, and ready to serve the people.

We are Southwest Virginia's leading booksellers, stationers and engravers.

We extend you a cordial invitation to visit our store when in need of any of the following:

AnSCO Cameras and Films, Photograph Albums, Conklin Fountain Pens, Fiction—all Kinds, School Books and Supplies, Victrolas and Records, Sweaters, Greeting Cards, School and College Pennants, Corona Typewriters, Picture Frames, Pickard China, Cut Glass, Tennis Goods, Engraved and Plain Stationery, Choice Line of Leather Goods.



MAIL ORDERS RECEIVE PROMPT AND
CAREFUL ATTENTION

CALDWELL-SITES COMPANY

105 SOUTH JEFFERSON STREET

ROANOKE, VIRGINIA

VAN LEAR BRO'S. PHARMACY
"The Rexall Store"

16 WEST CAMPBELL AVENUE, ROANOKE, VA.

ROANOKE AGENTS

Huyler's, Liggett's and Guth's Fine Box Candies,
Cadet Line Bulk Candies, 25 to 40
cents per pound

Full Line Imported and Domestic Toilet Articles

Agents Waterman's Ideal Fountain Pens
Symphony Lawn Stationery, Harmony Perfumes

IT'S RIGHT WHEN FROM VAN LEAR'S

KEEP THE HAPPY MEMORY
OF SCHOOL DAYS FOR ALL TIME

Your graduation portraits, and those of your classmates—precious to you now—will be priceless in the years to come. We are exhibiting new and attractive styles of school pictures, that will make most appropriate class gifts, and which are priced consistently.

THE KIDD STUDIO

Finest Appointed Studio in the South

THE NATIONAL EXCHANGE BANK

OF ROANOKE, VIRGINIA

Officers

T. T. Fishburne, Chairman of Board
Lucian H. Cocke, D. M. Taylor, Edward L. Stone, B. P. Huff
J. B. Fishburn, President
Vice-Presidents
E. B. Spencer, Cashier
N. W. Phelps, T. L. Engleby, A. H. Dudley
Assistant Cashiers
C. W. Beerbower, Auditor

Capital, . . . \$500,000.00

Surplus, . . . \$500,000.00

DESIGNATED DEPOSITORY OF THE UNITED STATES, STATE OF VIRGINIA
COUNTY OF ROANOKE AND CITY OF ROANOKE

ROANOKE BOOK AND STATIONERY COMPANY, INC.

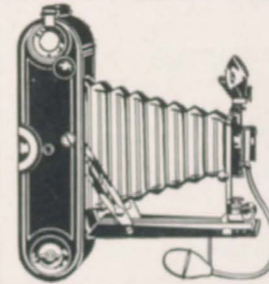
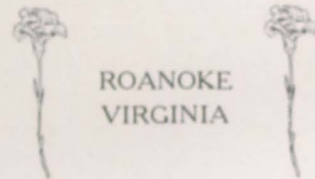
*Books, Stationery
Fancy Goods and
Picture
Framing*

15 CAMPBELL AVENUE, WEST
ROANOKE, VA.

FALLON

Florist

FLOWERS



Send Us Your KODAK FILMS to Finish

Good work, reasonable prices and prompt service.
Big stock of Kodaks, Photo Supplies and Sporting Goods,
Tennis and Basket-Ball Goods, Kodak Albums, Kodak Films,
Pocket Knives, Scissors, Flashlights, Ingersoll Watches,
Ladies' Handbags in the latest patterns, Passepartout Bind-
ing, Dumb Bells and Indian Clubs, Parker Fountain Pens.
Send in your orders. We will appreciate them, whether
large or small.

ROANOKE CYCLE CO.

103 Campbell Avenue, West

ROANOKE, VA.

SPIGEL'S

WOMEN'S SPECIALTY SHOP

19 Campbell Ave., through to
18 Salem Avenue, West

ROANOKE

VIRGINIA

"THE BIG DRUG STORE"

Our Prescription Department is equipped with drugs, chemicals, etc., of highest purity,
and all compounding is done by skilled pharmacists, who employ the most improved methods.
Imported and Domestic Articles, best stock in town.
American, English and French Perfumes, the latest specialties of all the leading makers.
Foss' Quality and Nunnally's Chocolates, Peters' and Nestle's Swiss Chocolates and
Huyler's Specialties. All the latest souvenir cards. The ones of Hollins are the best
ever produced.

BARNETT-SCHENK DRUG COMPANY

31 Campbell Avenue, through to 32 Salem Avenue

ROANOKE, VA.

THE HARRISON JEWELRY CO.

*Appreciating the Patronage of Hollins College,
Hopes to Merit the Same*

Telephone 3206

23 WEST CAMPBELL AVENUE

ROANOKE, VIRGINIA

HANCOCK DRY GOODS CO.

Campbell Avenue, Henry Street, Salem Avenue

ROANOKE, VIRGINIA

Merchandise of the Better Kind

Women's and Children's Ready-to-Wear Apparel, Silks and Dress Goods, White Goods, Linens, Hosiery, Gloves, Laces, Ribbons, Rugs and Draperies, Trunks and Bags, and Kindred Lines.

Hancock's is a store that will appeal to those who know and demand the best.

Authentic styles, superior qualities and dependable values are the foundation stones upon which this store is building its patronage day by day.

MAY WE NUMBER YOU AMONG OUR THOUSANDS OF
SATISFIED CUSTOMERS?

BECKER'S

209 SOUTH JEFFERSON STREET

ROANOKE, VIRGINIA

The home of Whitman's unsurpassed Candies and Confections—a dainty package for college girls.

Delicious salads, mayonaise dressing, fancy and plain cakes, for "feasts," birthday or other special occasions, prepared by a famous Southern housekeeper and cook.

ROANOKE STEAM DYE WORKS

J. M. ROBERTS, PROPRIETOR

Bring them to us, or phone and we will send, and will promptly dye or clean ladies' or gentlemen's clothing, gloves, feathers, laces, curtains, etc. We exercise extreme care in handling delicate articles, and guarantee to return them uninjured. All goods dyed in the most permanent colors and superior manner. Phone 229.

508 SOUTH JEFFERSON STREET

ROANOKE, VIRGINIA

JUST DIFFERENT

In these two words is summed up the distinction between the exclusive and the mediocre in the realm of style

STIFF'S HATS ARE DIFFERENT

Our large corps of fashion artists are in charge of a designer from Gage Bros. & Co., New York, producing designs which are both correct and exclusive.

STIFF'S

"They Tell the Style"

135 Campbell Avenue, West

ROANOKE, VIRGINIA

THEY FIT, WEAR AND DRESS

THE FEET OF THE MOST FASTIDIOUS WOMAN

The latest novelties are awaiting your inspection. Our prompt service is always at your demand.

I. BACHRACH SHOE COMPANY

18 SOUTH JEFFERSON STREET

ROANOKE, VIRGINIA

**E. A. Snead
Furniture
Company, Inc.**

CLIFTON FORGE
VIRGINIA



*Everything
for the House*

